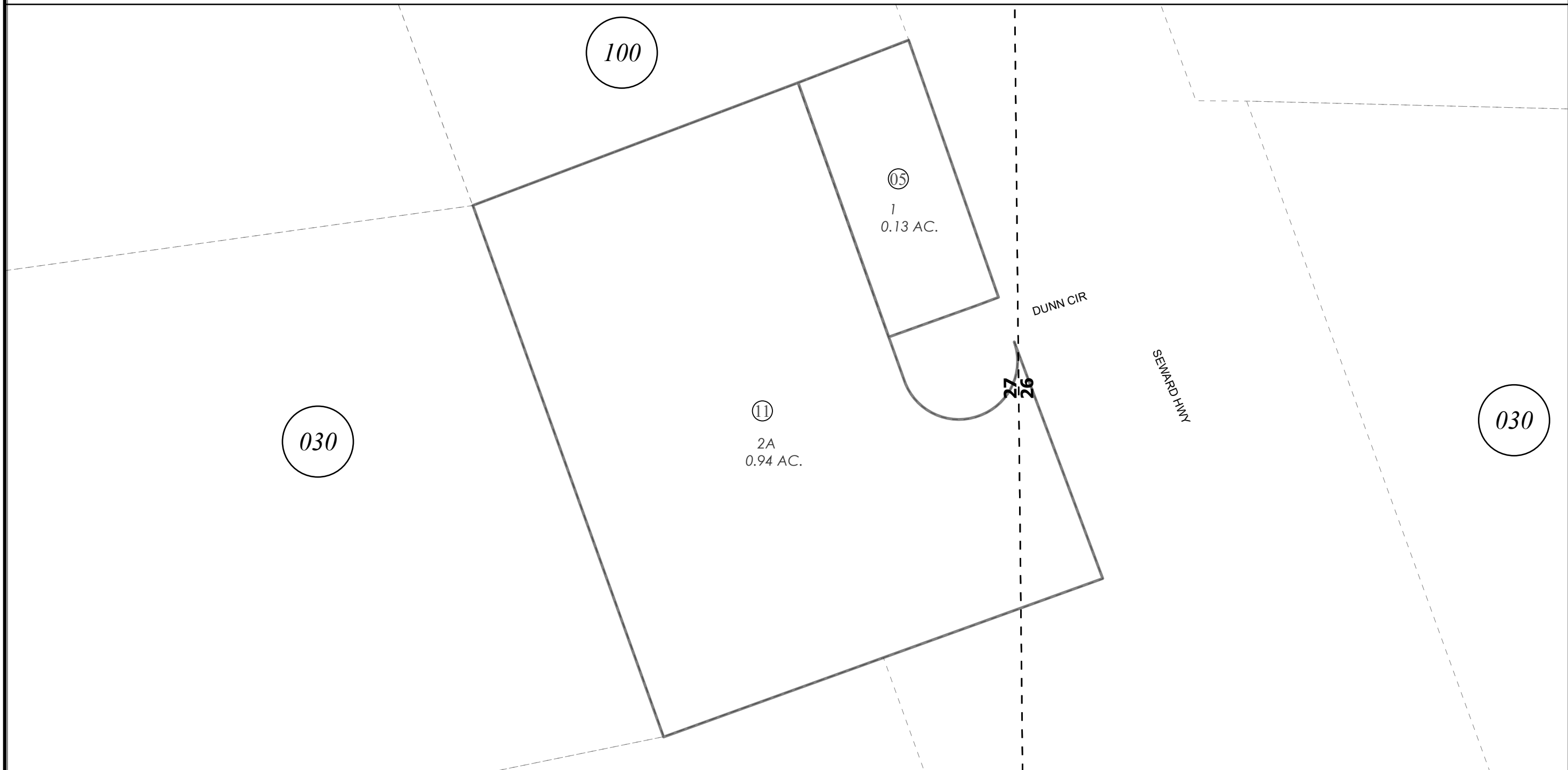
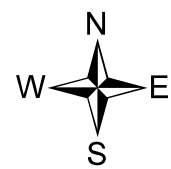


POR. SEC. 27, T01N, R01W, S.M.

144-130



SEPTEMBER 30, 2024



0 10 20 40 Feet

For 2025 assessment roll		
Delete	Add	Revise
	To	
10	144-030+	

Assessor's Map
Kenai Peninsula Borough

KELLY SUB OF TRACT A FOLZ SUB SW0520037
 FOLZ SUB SW0000024
 FOLZ SUB DUNN REPLAT SW0990015
 FOLZ SUB 2023 REPLAT SW2024016

This map is prepared for Kenai Peninsula Borough Assessing Dept. use only and is not intended for conveyance nor is it a survey.

Note- Assessor's block Numbers Shown in Elipses
 Assessor's Parcel Numbers Shown in Circles