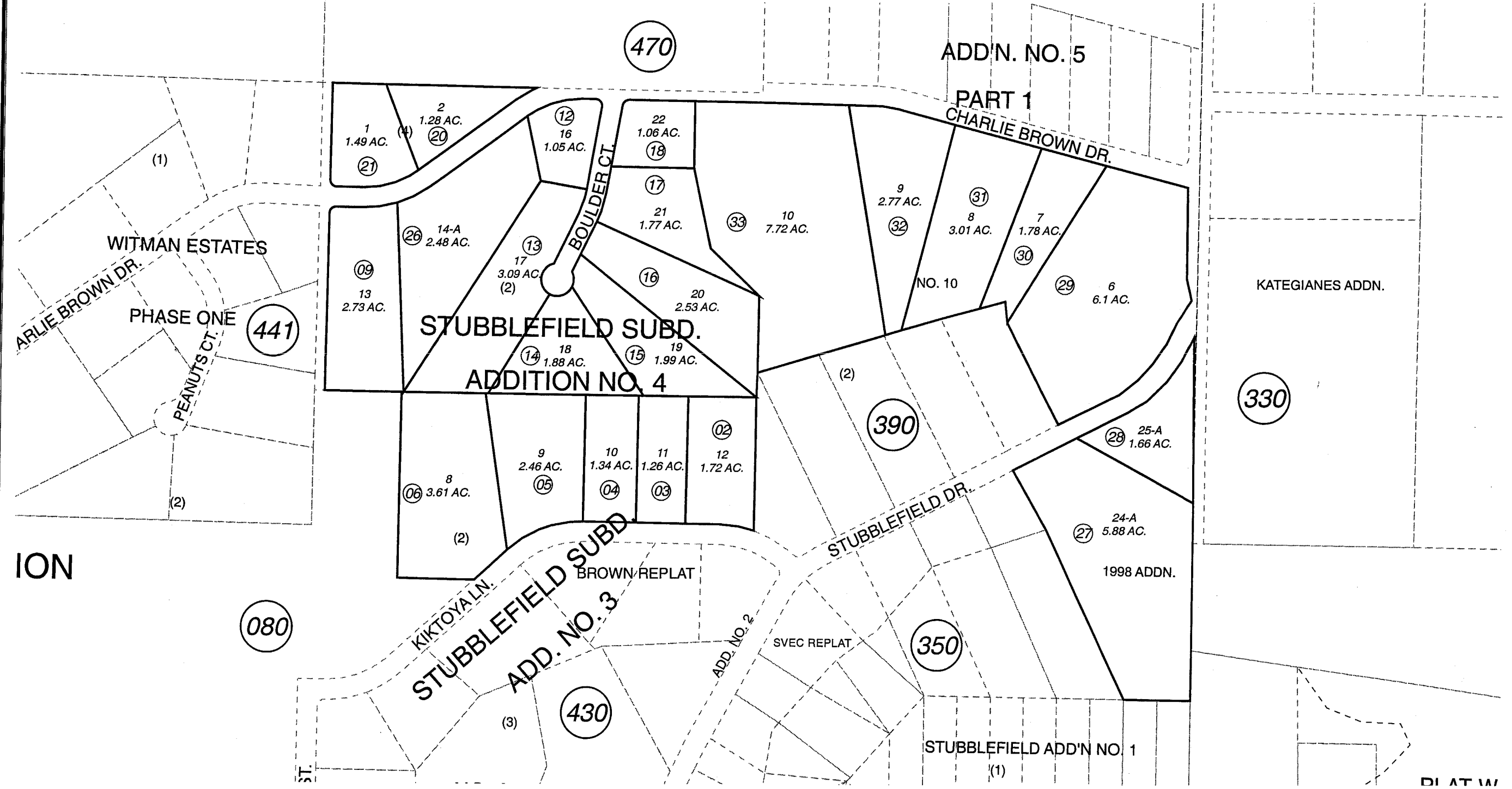


POR. SEC. 21, T04N, R11W, S.M.

131-440



AUGUST 23, 2005

For 2006 assessment roll		
Delete	Add	Revise
	To	
7,8	131080+	



Assessor's Map
Kenai Peninsula Borough

FOREST ACRES SUB SW0000017
FOREST ACRES SUB LOT LL FOGARTY REPLAT SW0840009

This map is prepared for Kenai Peninsula Borough Assessing Dept. use only and is not intended for conveyance nor is it a survey.
Note- Assessor's block Numbers Shown in Ellipses
Assessor's Parcel Numbers Shown in Circles