

NW 1/4 NW 1/4 SEC. 27, T04S, R14W, S.M.

165-750

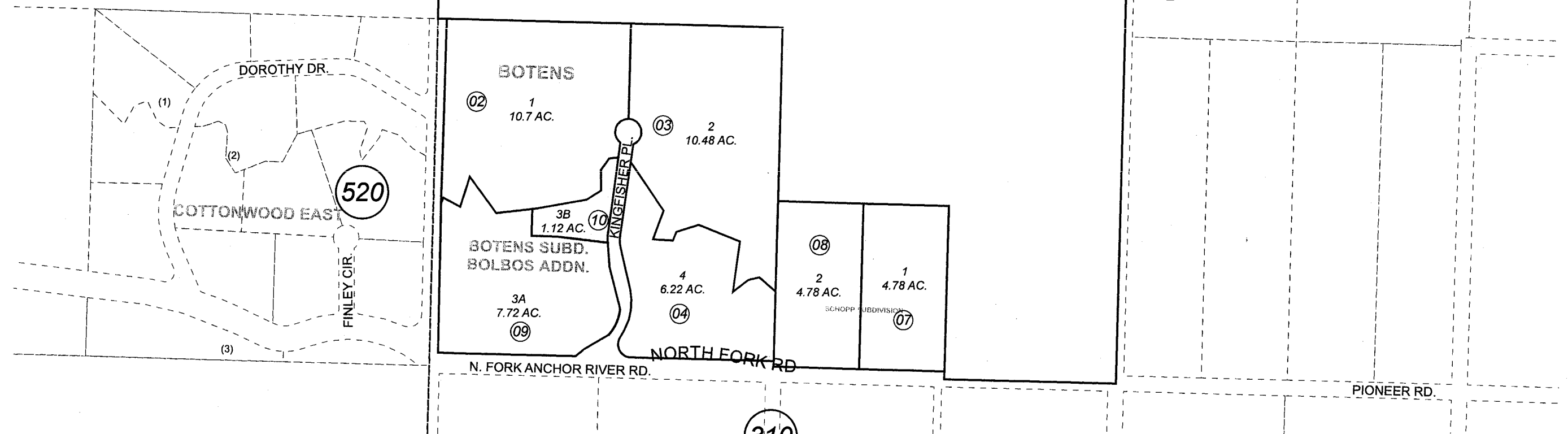
370

180

110 AC.
06

260

PANORAMIC E



JULY 16, 2007

For 2008 assessment roll		
Delete	Add	Revise
To		
1	9,10	



Assessor's Map
Kenai Peninsula Borough

BOTENS SUB HM0820082
SCHOPP SUB HM0940020
BOTENS SUB BOLBOS ADDN HM2007057

This map is prepared for Kenai Peninsula Borough Assessing Dept. use only and is not intended for conveyance nor is it a survey.
Note- Assessor's block Numbers Shown in Ellipses
Assessor's Parcel Numbers Shown in Circles