

POR. SEC. 1, T07N, R12W, S.M.

012-080

020

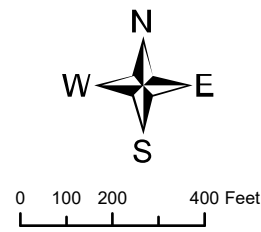
390

130

PRATHER ST.

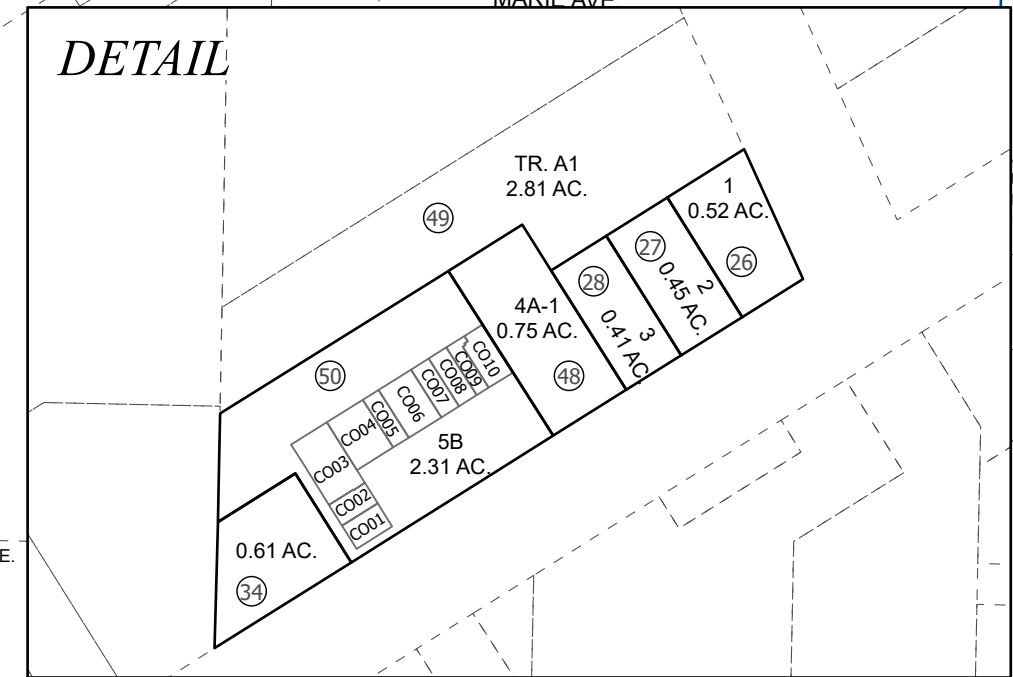
JULY 22, 2022

For 2023 assessment roll		
Delete	Add	Revise
To		50
		ADDED
		CONDOS



Assessor's Map  
Kenai Peninsula Borough

MAC MCGAHAN SUB KN0001468  
 NORTH KENAI FIRE DEPARTMENT KN0730013  
 MAC MCGAHAN SUB RESUB NO 1 KN0730082  
 AURORA HEIGHTS ADDN TO BLOCK 11 & REPLAT KN0780197  
 MAC MCGAHAN SUB 1983 ADDN KN0830031  
 MAC MCGAHAN SUB 2010 ADDN KN2011055  
 MAC MCGAHAN SUB 2020 REPLAT KN2022018  
 NIKISHKA MALL PROPERTIES CONDOMINIUMS KN2022028



Note- Assessor's block Numbers Shown in Ellipses  
 Assessor's Parcel Numbers Shown in Circles

This map is prepared for Kenai Peninsula Borough Assessing Dept. use only and is not intended for conveyance nor is it a survey.

