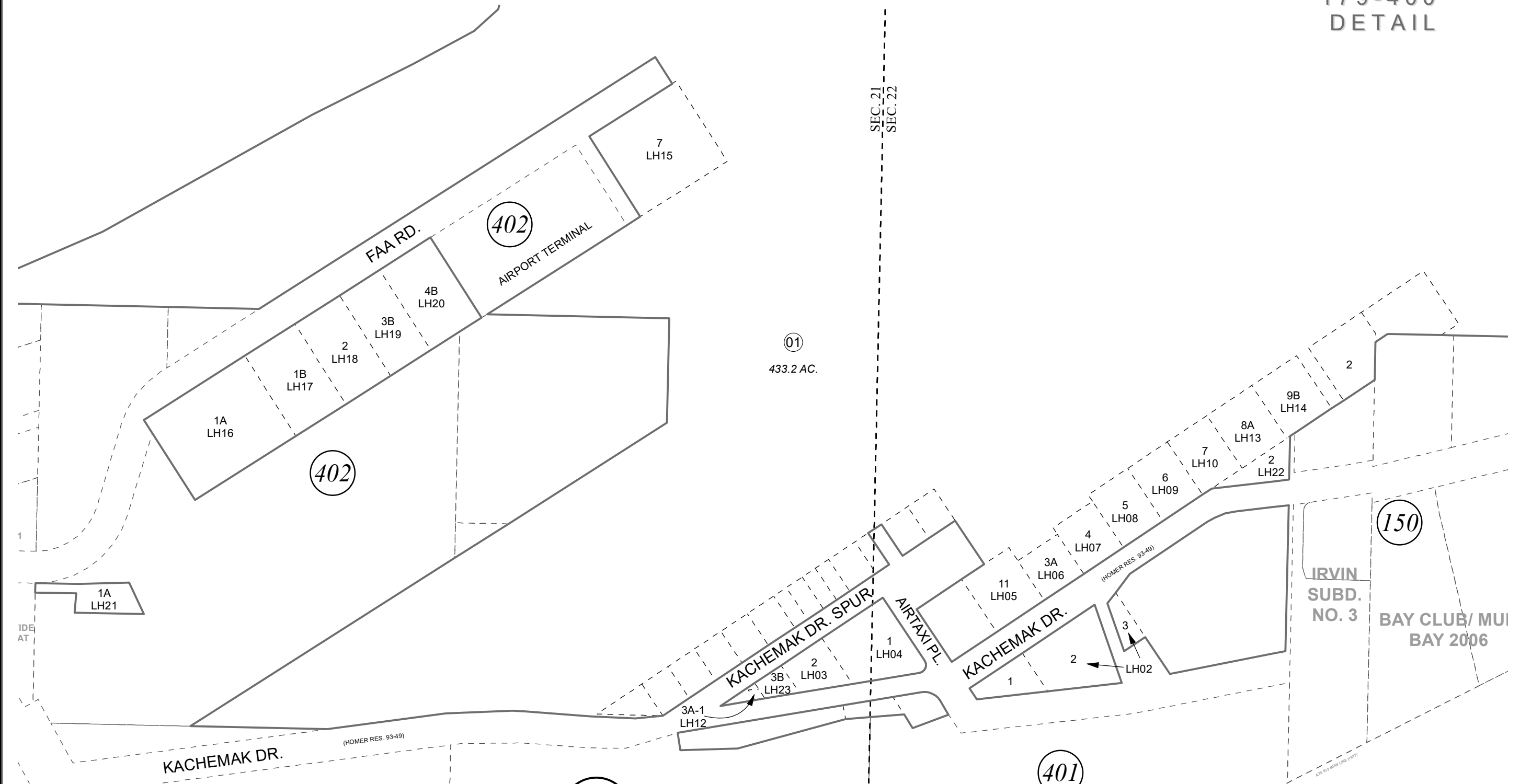


POR. SEC. 21 & 22, T06S, R13W, S.M.

179-400
DETAIL



0 100 200 Feet

FEBRUARY 4, 2022

For 2022 assessment roll		
Delete	Add	Revise
To		01
	(ADDED LEASEHOLD LH23)	

BK
181

Assessor's Map
Kenai Peninsula Borough

HOMER AIRPORT LAND OCCUPANCY

NOTE: HOMER AIRPORT LAND LEASE LOTS
RESIDE ON PARCEL NO. 179-400-01

This map is prepared for Kenai Peninsula Borough Assessing Dept. use only and is not intended for conveyance nor is it a survey.

Note- Assessor's block Numbers Shown in Ellipses
Assessor's Parcel Numbers Shown in Circles