

SEC. 16, T07N, R12W, S.M.

014-030

BK 012

See Detail
Poolside Estates

LAKE 9.29 ac. (28)

TR. A 20.88 ac. (27)

Tr. M 2.51 ac. (18)

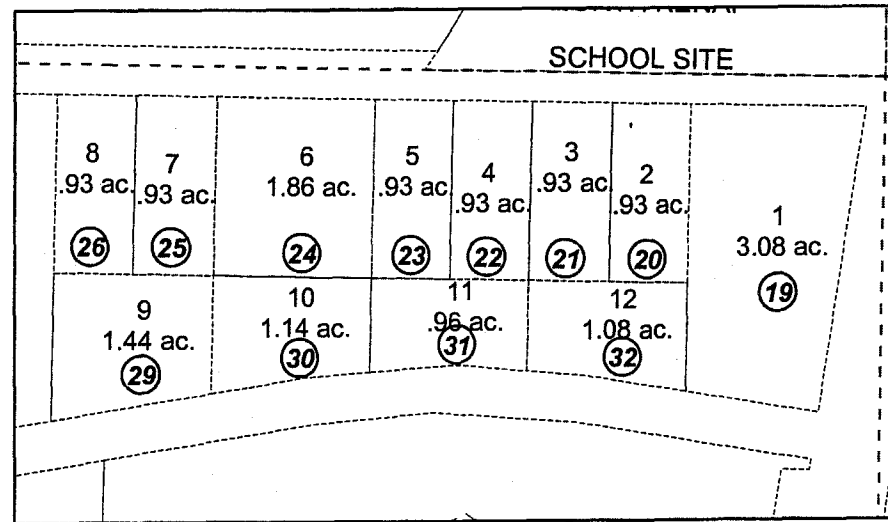
CHEVRON TRACTS
SUBDIVISION

Tr. D1 292.6 ac. (16)

16

Cook Inlet

Detail



Tr. F 6.98 ac. (12)

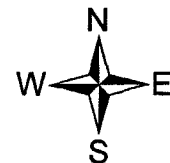
Tr. E1 100.36 ac. (17)

(2)

(4)

(5)

15



July 24, 2001

For 2002 assessment roll		
Delete	Add	Revise
	To	
15	19-32	

Assessor's Map
Kenai Peninsula Borough

CHEVRON TRACTS KN0960090
POOLSIDE ESTATES KN2001012

This map is prepared for Kenai Peninsula Borough Assessing Dept. use only and is not intended for conveyance nor is it a survey.

Note- Assessor's block Numbers Shown in Elipses
Assessor's Parcel Numbers Shown in Circles