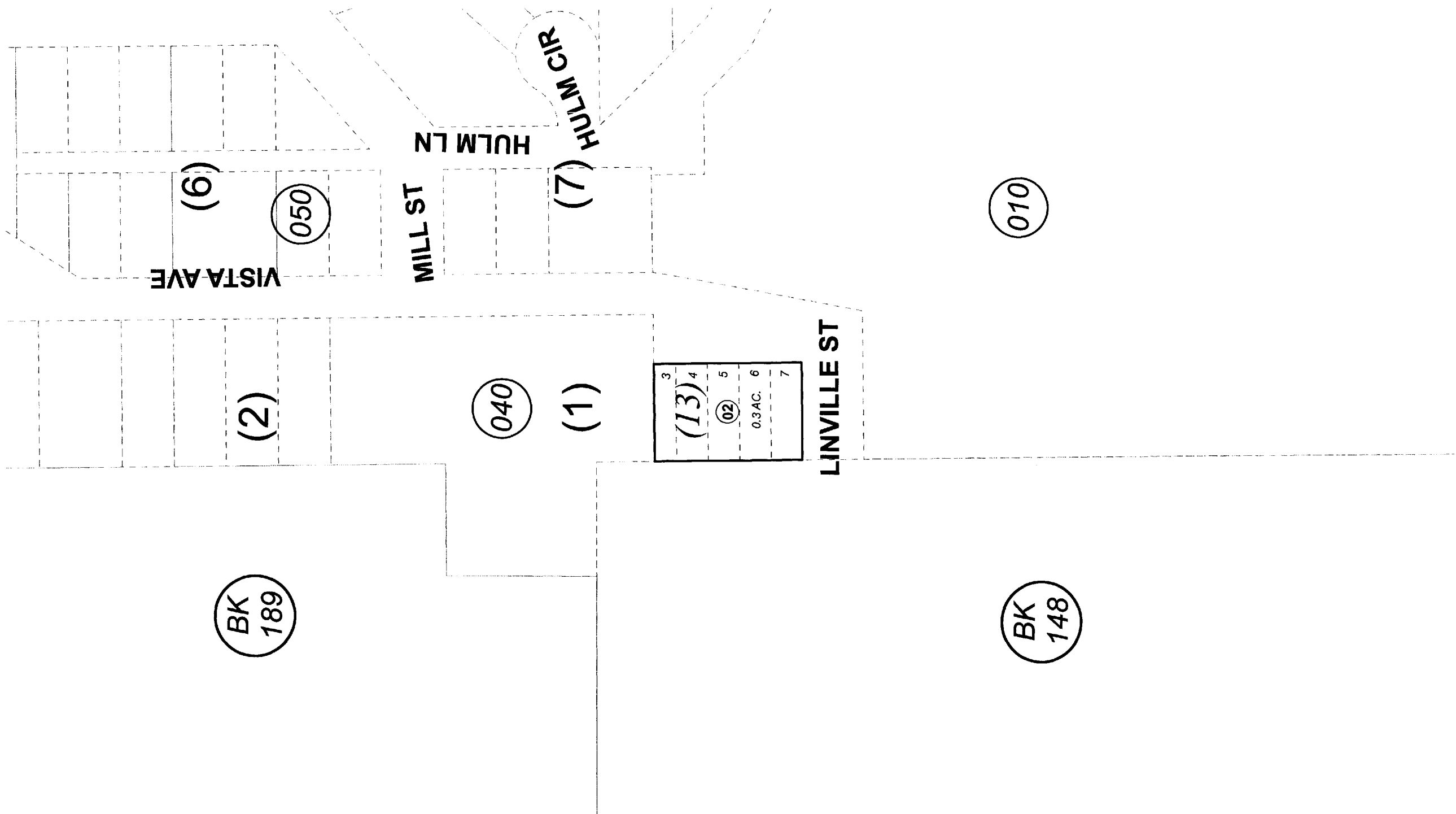


147-031

POR. SEC. 4, T01S, R01W, S.M.



BK 148

BK 189

(1)

(2)

(6)

(50)

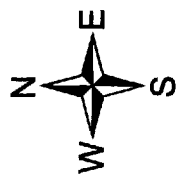
(7)

(70)

3	4	5	6	7
(13)				
0.3 AC.				
02				

For 2011 assessment roll	
Delete	Add
To	
03101	03201
03202	03202
03203	03205
147101+	

JANUARY 20, 2011



Assessor's Map  
Kenai Peninsula Borough

ORIGINAL TOWNSITE OF SEWARD LAUBNER ADDN SW0000002

This map is prepared for Kenai Peninsula Borough Assessing Dept. use only and is not intended for conveyance nor is it a survey.

Note- Assessor's block Numbers Shown in Ellipses  
Assessor's Parcel Numbers Shown in Circles