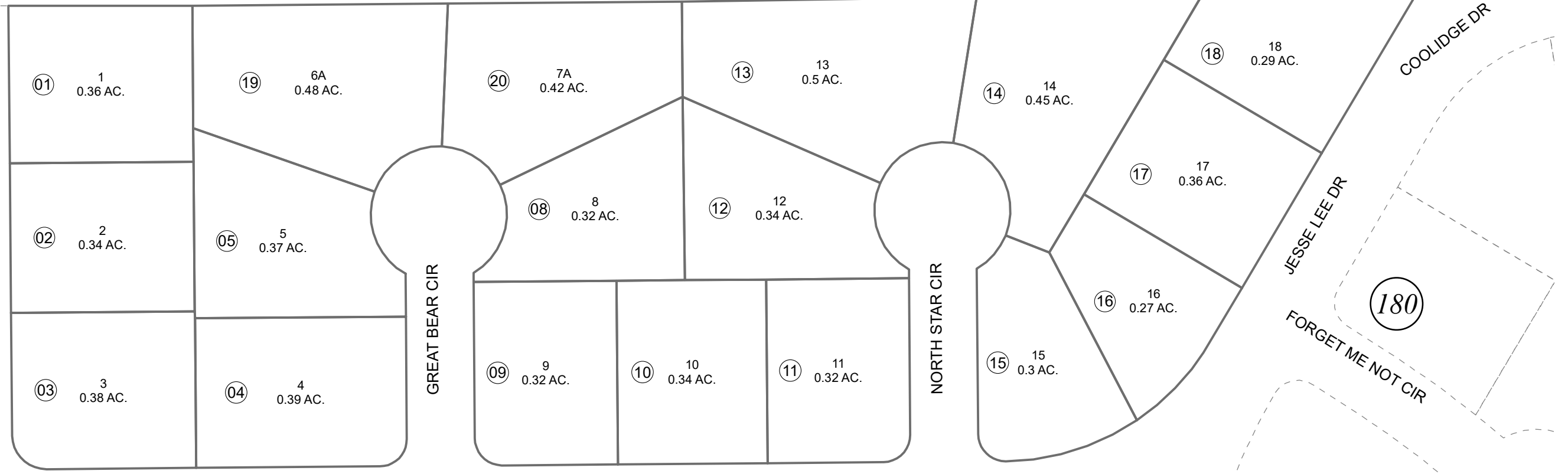


POR. SW1/4 SEC. 34, T01N, R01W, S.M.

145-190

021

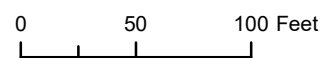
023



200

AUGUST 16, 2023

For 2024 assessment roll		
Delete	Add	Revise
	To	
06,07	19,20	



Assessor's Map
Kenai Peninsula Borough

JESSE LEE HEIGHTS SUB SW0000050
JESSE LEE HEIGHTS GREAT BEAR ADDN SW2023004

Note- Assessor's block Numbers Shown in Ellipses
Assessor's Parcel Numbers Shown in Circles

This map is prepared for Kenai Peninsula Borough Assessing Dept. use only and is not intended for conveyance nor is it a survey.