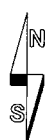
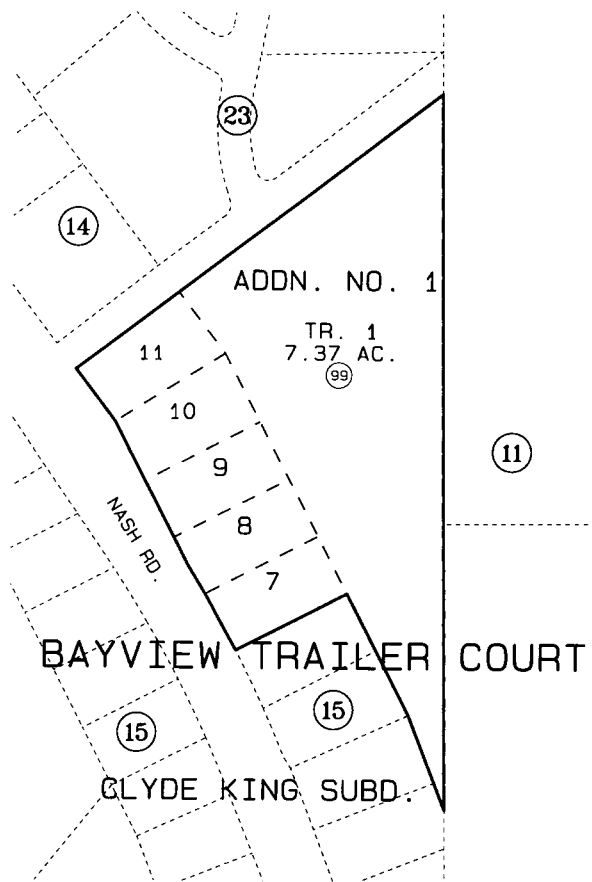


PORTION OF SEC. 36, T1N, R1W, SEWARD MERIDIAN

145-153

- (02) SPACE 02
- (03) SPACE 03
- (04) SPACE 04
- (05) SPACE 05
- (06) SPACE 06
- (07) SPACE 07
- (08) SPACE 08
- (09) SPACE 09
- (10) SPACE 10
- (11) SPACE 11
- (12) SPACE 12
- (13) SPACE 13
- (14) SPACE 14
- (15) SPACE 15
- (16) SPACE 16
- (17) SPACE 17
- (18) SPACE 18
- (19) SPACE 19
- (20) SPACE 20
- (21) SPACE 21
- (22) SPACE 22
- (23) SPACE 23
- (24) SPACE 24



DATE: NOV. 14, 1996
 FOR 1997 ASSESSMENT ROLL
 DELETE ADD REVISED
 TO
 NEW PAGE

Assessor's Map
 Kenai Peninsula Borough

CLYDE KING SUB SW000020
 CLYDE KING SUB ADDN NO 1 SW740005

THIS MAP IS PREPARED FOR KENAI PENINSULA BOROUGH ASSESSING DEPT. USE ONLY AND IS NOT INTENDED FOR ANY OTHER USE OR REPRESENTATION

NOTE - Assessor's Block Numbers Shown In Ellipses
 Assessor's Parcel Numbers Shown In Circles