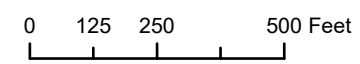
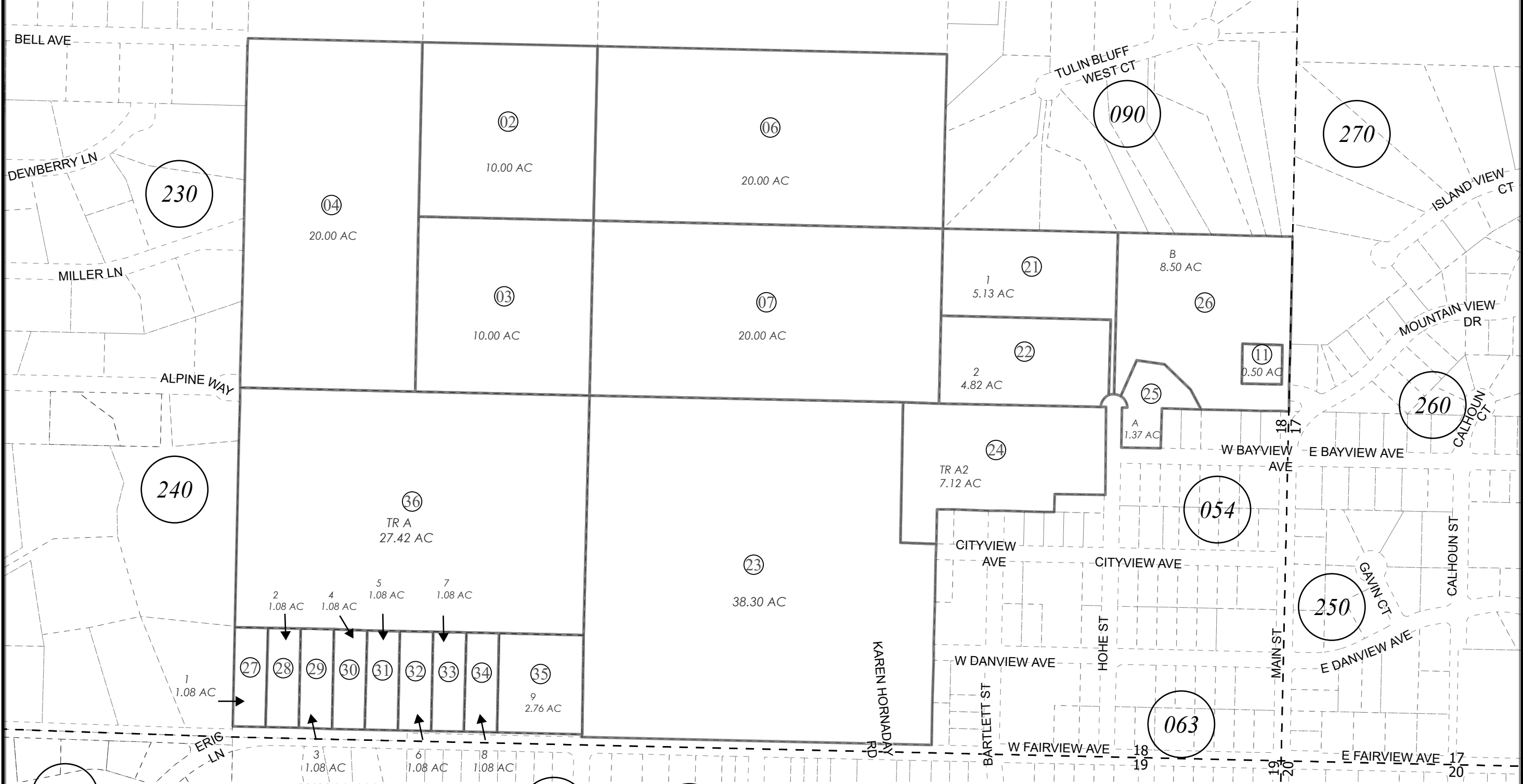


POR. S1/2 SEC. 18, T06S, R13W, S.M.

175-040



MAY 24, 2024

For 2025 assessment roll		
Delete	Add	Revise
To		
05	27-36	

300 111

SOUTH PENINSULA HOSPITAL SUB 2005 ADDN HM2006038  
 TSUNAMI VIEW SUB HM2007086  
 SOUTH PENINSULA HOSPITAL SUB 2008 ADDN HM2008092  
 TSUNAMI VIEW SUB NO 2 HM2018005  
 TERRA BELLA SUB HM2024011

Assessor's Map  
 Kenai Peninsula Borough

This map is prepared for Kenai Peninsula Borough Assessing Dept. use only and is not intended for conveyance nor is it a survey.  
 Note- Assessor's block Numbers Shown in Ellipses  
 Assessor's Parcel Numbers Shown in Circles