

SEC. 36, T01N, R01W, S.M.

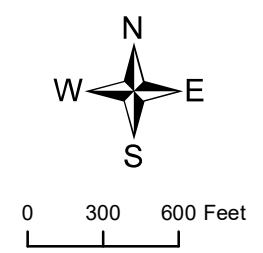
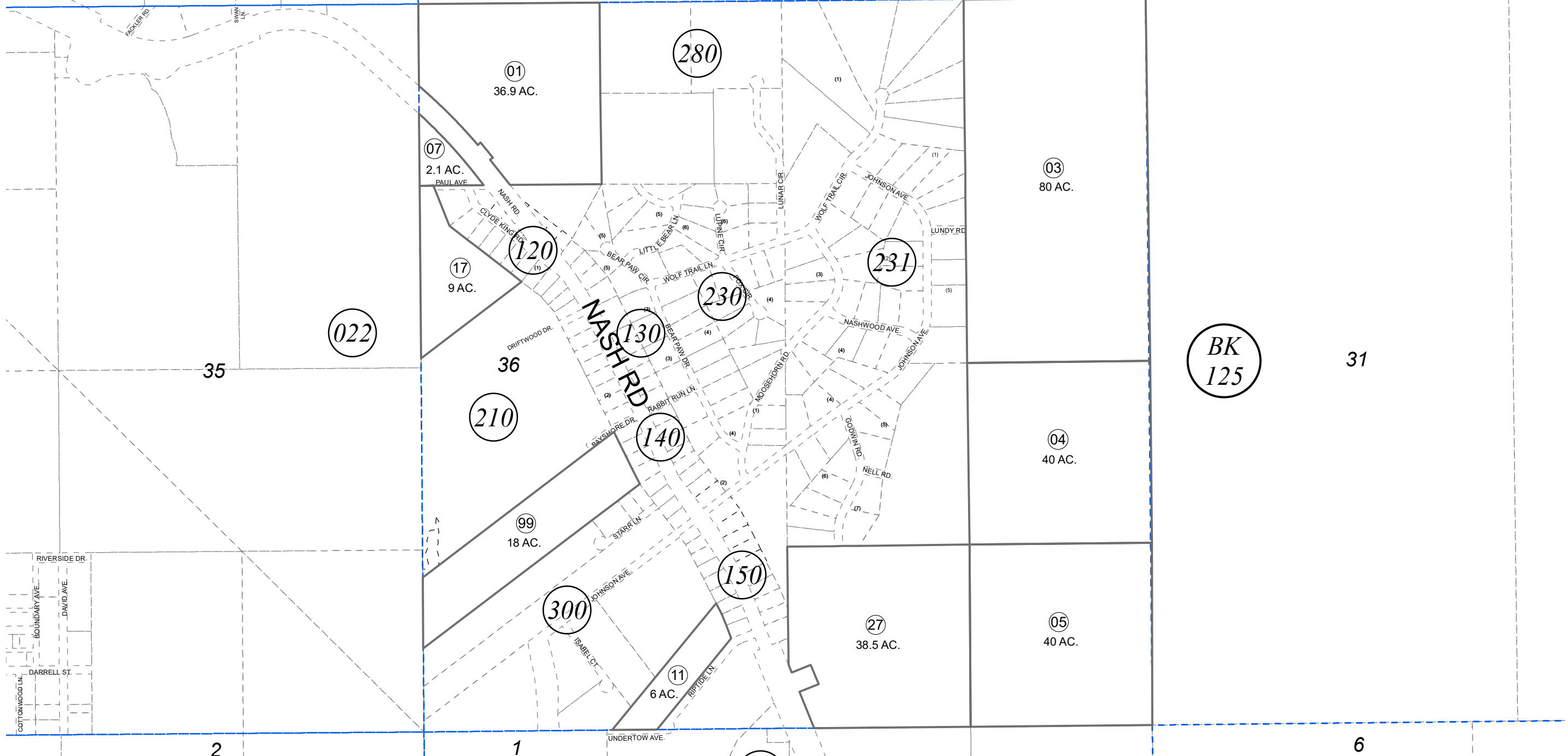
145-110

BK  
125

25

30

26



DECEMBER 18, 2020

For 2021 assessment roll		
Delete	Add	Revise
To		
09	145-170+	27
(ACREAGE REVISION)		

Assessor's Map  
Kenai Peninsula Borough

Note- Assessor's block Numbers Shown in Elipses  
Assessor's Parcel Numbers Shown in Circles

This map is prepared for Kenai Peninsula Borough Assessing Dept. use only and is not intended for conveyance nor is it a survey.