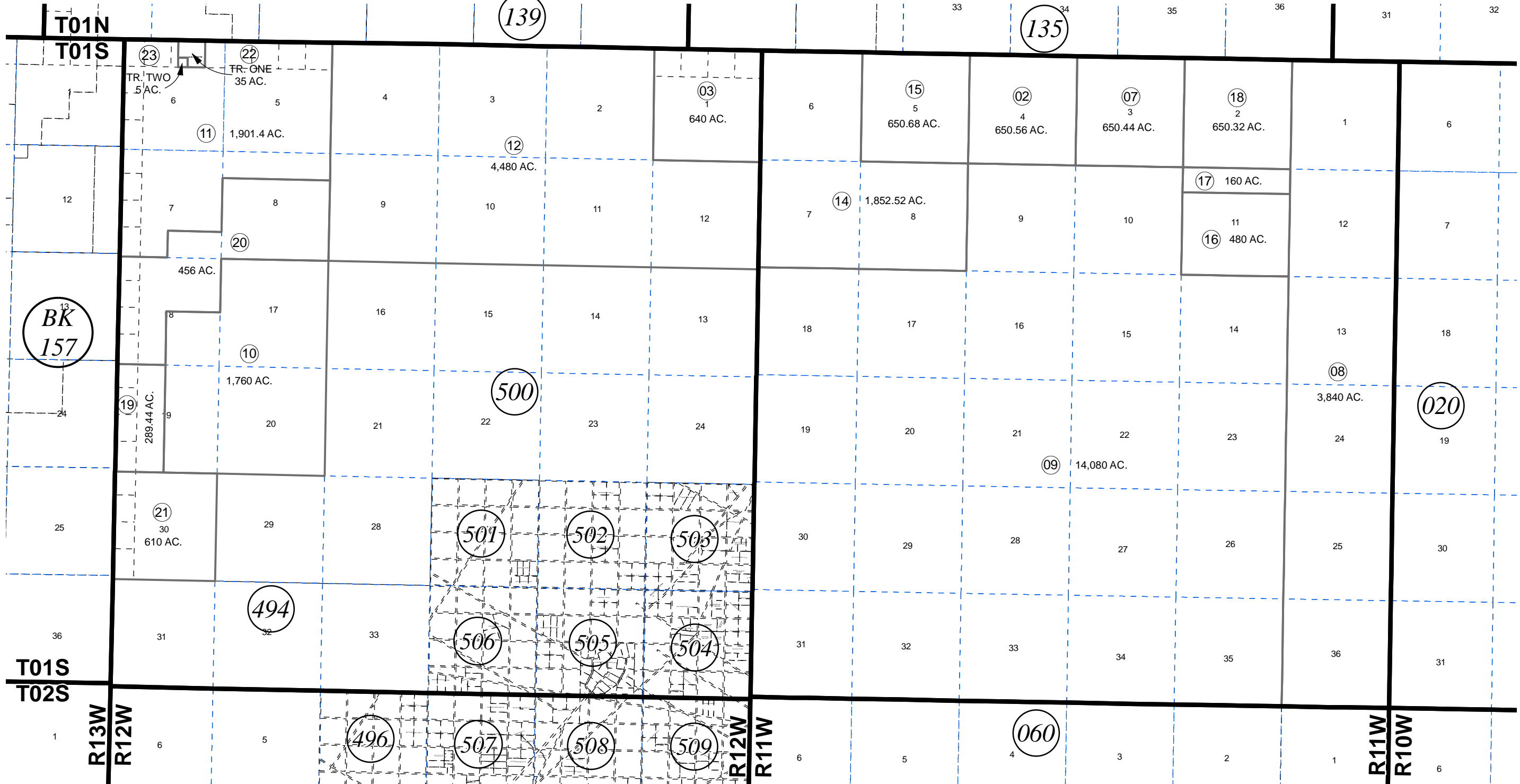


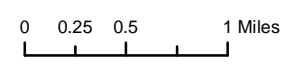
T01S, R11W, R12W, S.M.

185-010



MARCH 4, 2014

| | | |
|--------------------------|-------|--------|
| For 2015 assessment roll | | |
| Delete | Add | Revise |
| To | | |
| 13 | 22,23 | |



Assessor's Map
Kenai Peninsula Borough

TACHICK'S RETREAT HM2014003

This map is prepared for Kenai Peninsula Borough Assessing Dept. use only and is not intended for conveyance nor is it a survey.

Note- Assessor's block Numbers Shown in Ellipses
Assessor's Parcel Numbers Shown in Circles