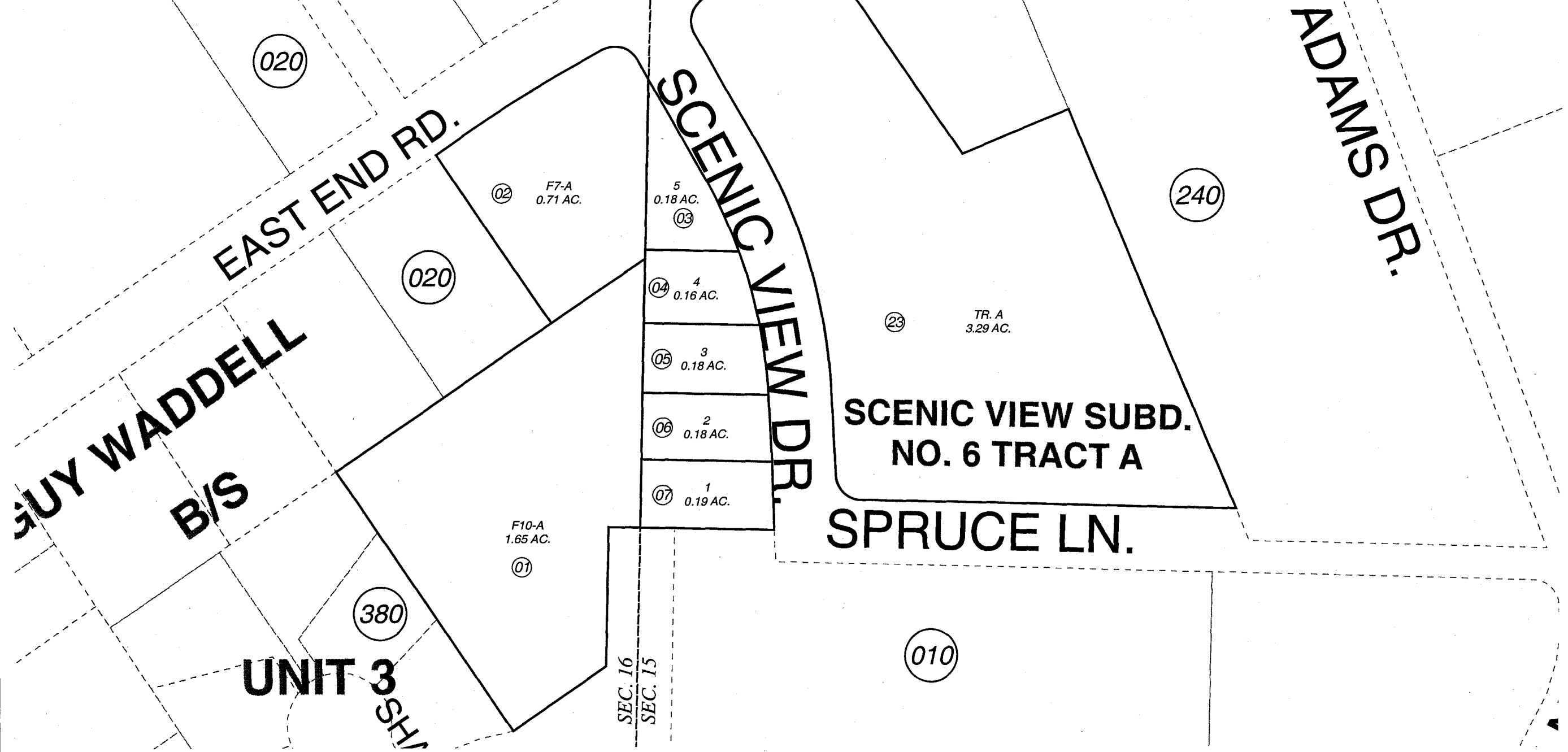


POR. SEC. 15 & 16, T06S, R13W, S.M.

179-390



DATE: Jan 25, 2005

For 2005 assessment roll		
Delete	Add	Revise
To		
8-22	23	



Assessor's Map  
Kenai Peninsula Borough

SCENIC VIEW SUB NO 6 HM0820047  
SCENIC VIEW SUB NO 6 TRACT A HM2004104

This map is prepared for Kenai Peninsula Borough Assessing Dept. use only and is not intended for conveyance nor is it a survey.  
Note- Assessor's block Numbers Shown in Elipses  
Assessor's Parcel Numbers Shown in Circles