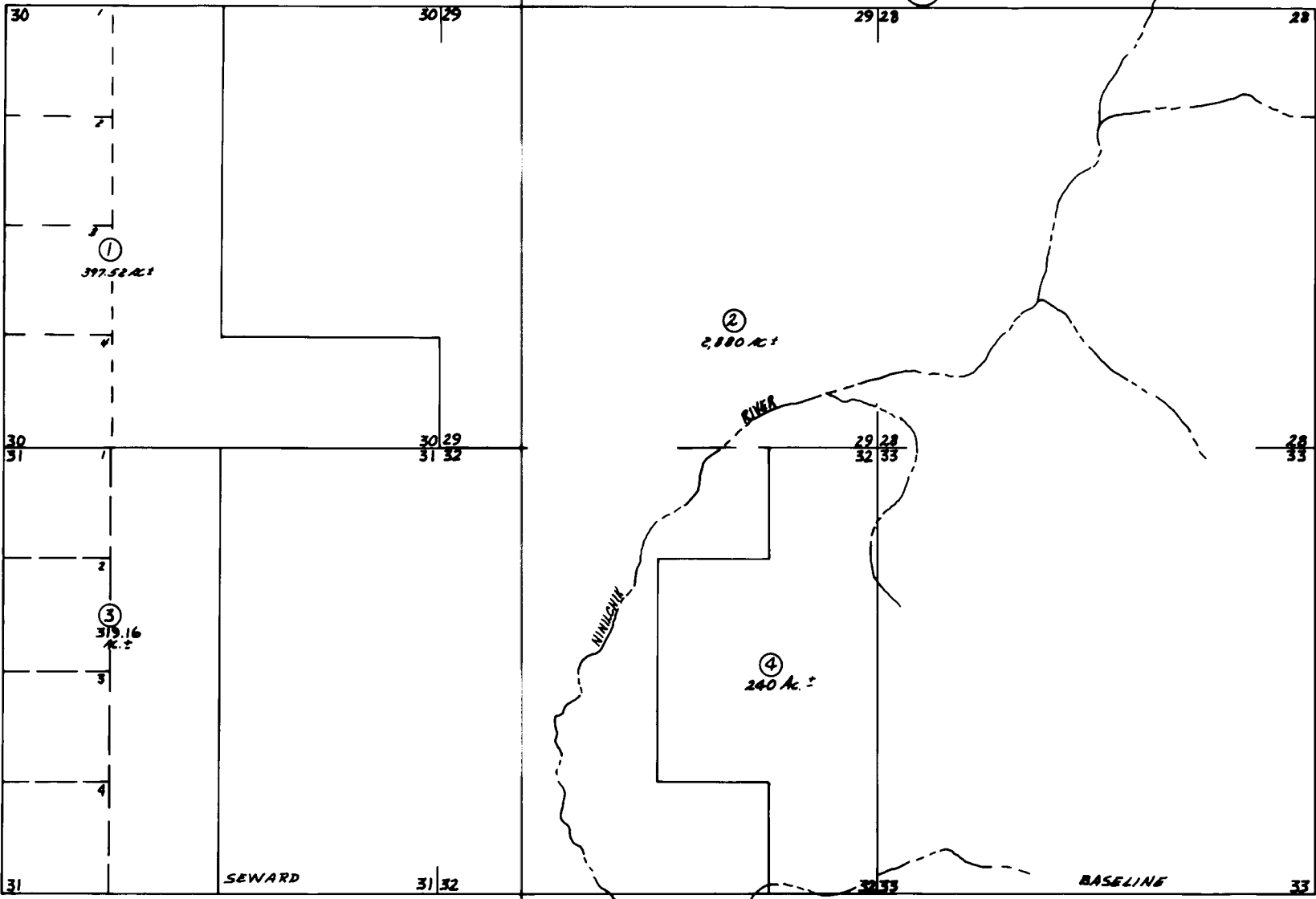


SEC. 28, 29, 30, 31, 32, 33, T1N, R12W, S. 16 & M.

139-11



(10)

(12)

BK 157

BK 185

Assessor's Map  
Kenai Peninsula Borough, Alaska

NOTE - Assessor's Block Numbers Shown in Ellipses  
Assessor's Parcel Numbers Shown in Circles