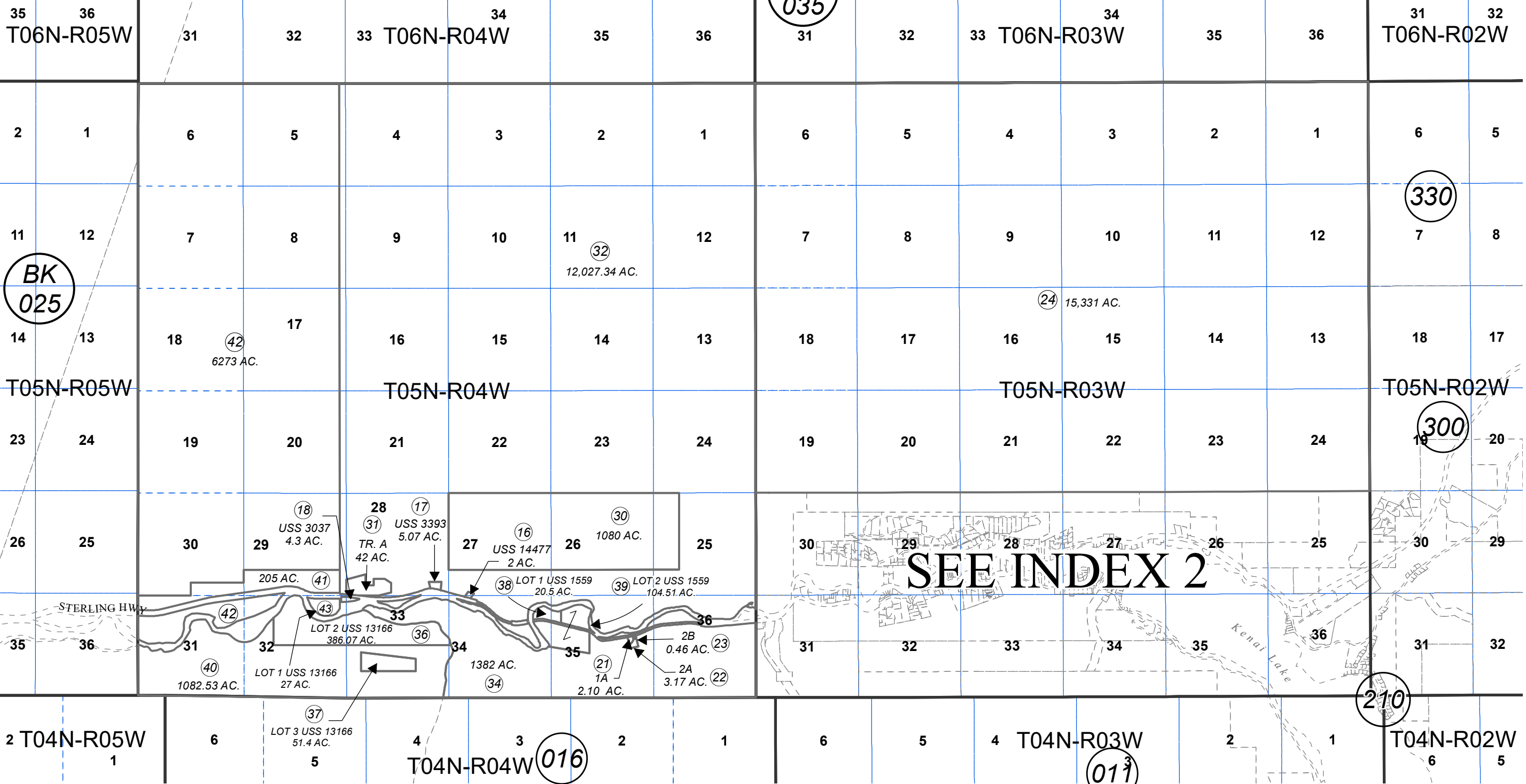


T05N, R03W & R04W, S.M.

119-010

BK 035



BK 025

330

300

210

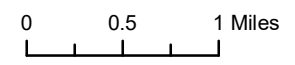
016

011

SEE INDEX 2

OCTOBER 25, 2022

For 2023 assessment roll		
Delete	Add	Revise
	To	
33,35	41-43	



Assessor's Map  
Kenai Peninsula Borough

US SURVEY 3037 SW0003037  
 US SURVEY 3393 SW0003393  
 US SURVEY 3392 LOTS 1A 2A & 2B SW0810016  
 TR. A RUSSIAN RIVER SEC. 14(h)(1) SELECTION AGMT. SW2012-001084-0  
 US SURVEY 14477 SW0014477

This map is prepared for Kenai Peninsula Borough Assessing Dept. use only and is not intended for conveyance nor is it a survey.  
 Note- Assessor's block Numbers Shown in Ellipses  
 Assessor's Parcel Numbers Shown in Circles