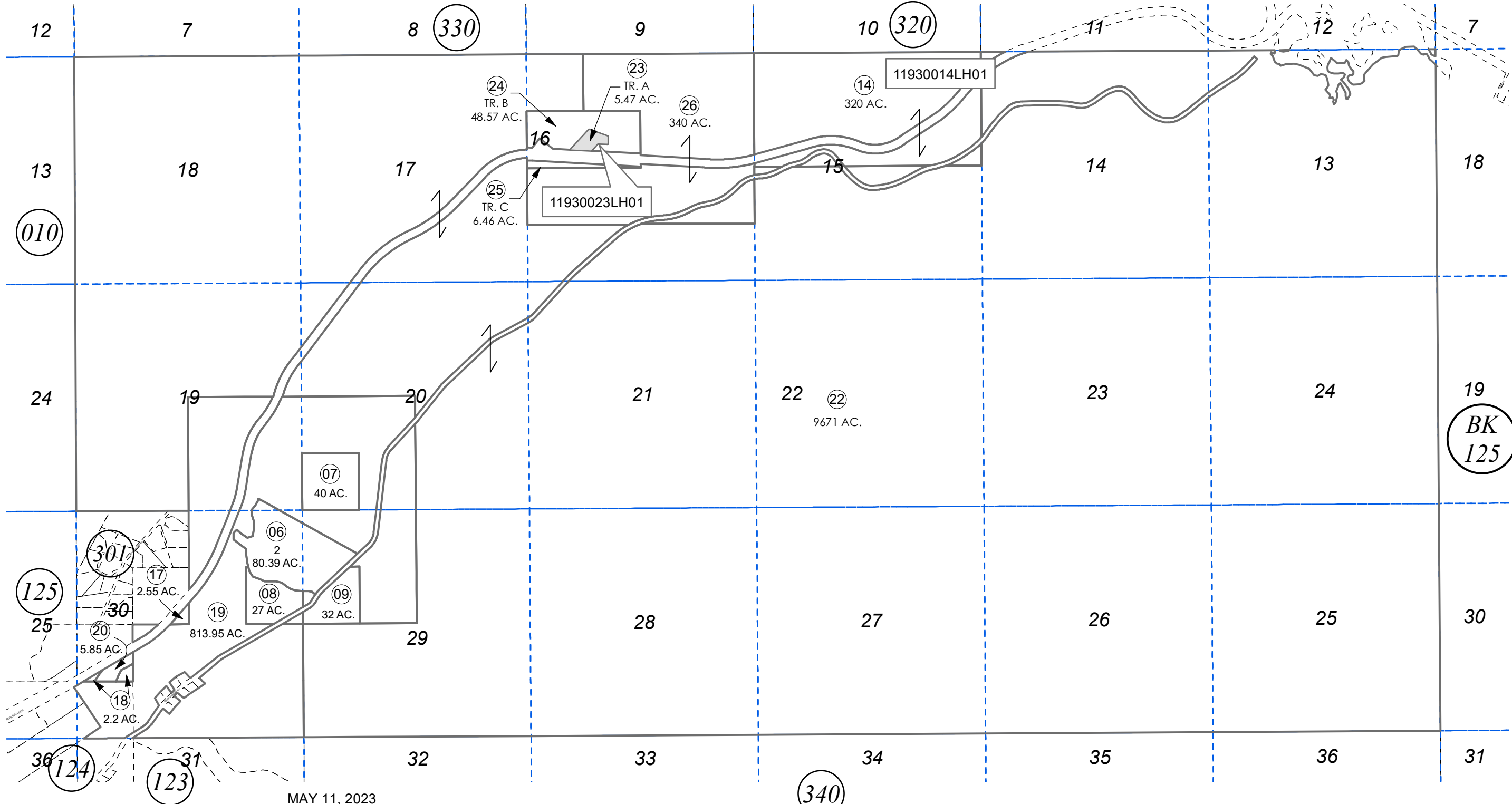


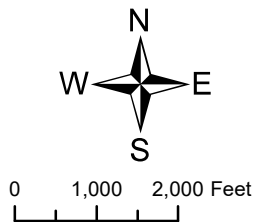
SEC. 13-30, T05N, R02W, S.M.

119-300



MAY 11, 2023

For 2023 assessment roll		
Delete	Add	Revise
	To	23
(ADDED LEASEHOLD REFERENCE)		



Assessor's Map
Kenai Peninsula Borough

U.S. SURVEY 7937 SW0007937
ALASKA STATE LAND SURVER 2014-26 SW2019007

This map is prepared for Kenai Peninsula Borough Assessing Dept. use only and is not intended for conveyance nor is it a survey.
Note- Assessor's block Numbers Shown in Elipses
Assessor's Parcel Numbers Shown in Circles