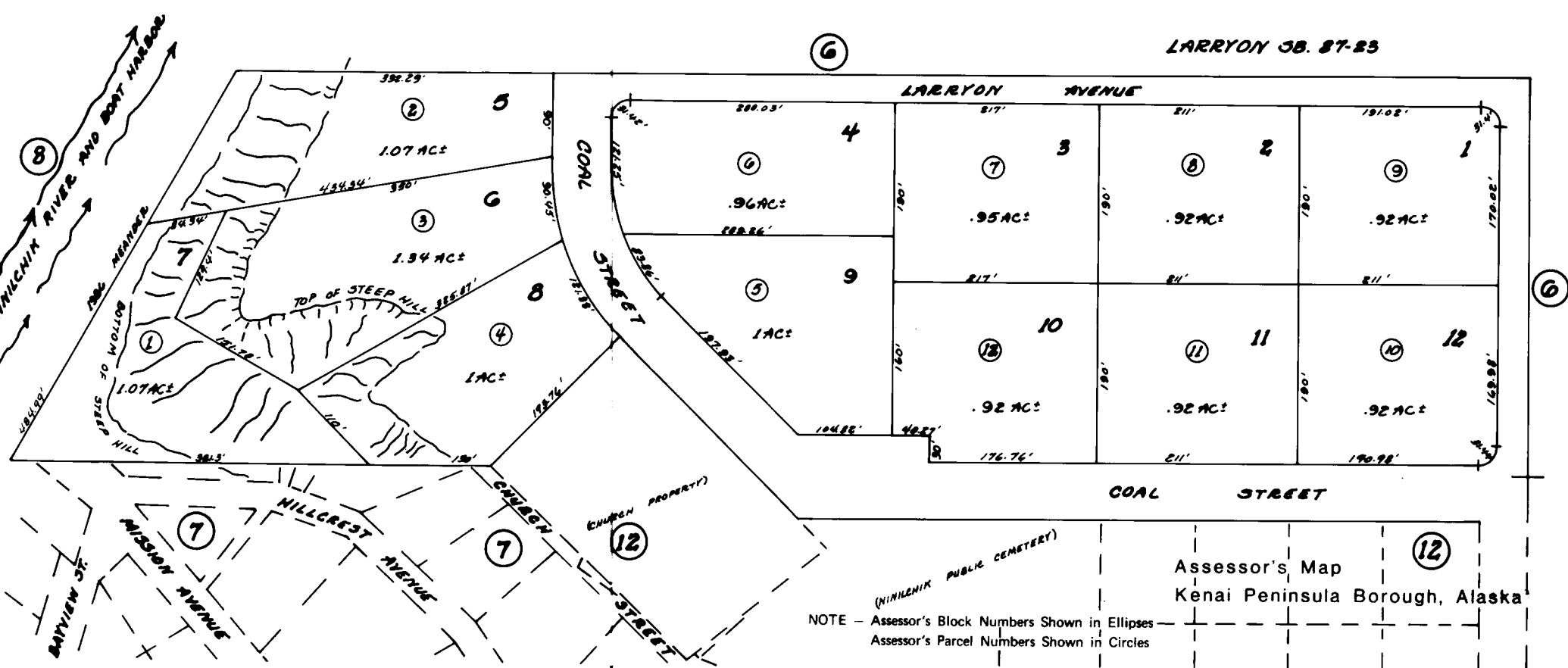


PORTION GOVERNMENT LOT 1

SECTION 34, TOWNSHIP 13, RANGE 14W, 3M



LARRYON CB. 87-23

6

6

12

Assessor's Map
Kenai Peninsula Borough, Alaska

NOTE - Assessor's Block Numbers Shown in Ellipses
Assessor's Parcel Numbers Shown in Circles