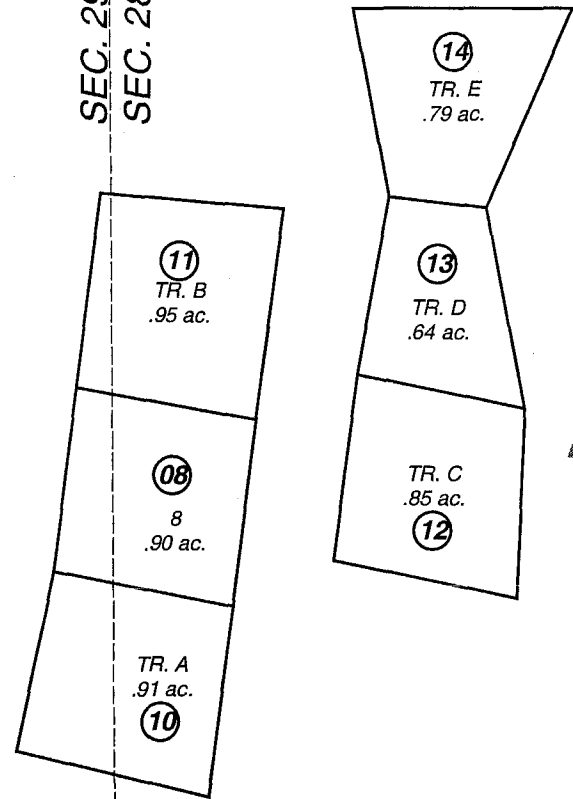


180

SEWARD HWY.

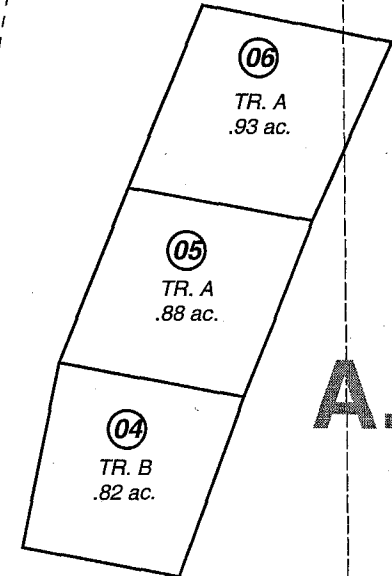
SEC. 29
SEC. 28



FESNO CREEK GROUP

A.S.L.S. 97-53

180



A.S.L.S. 99-29

A.S.L.S. 99-24



JANUARY 27, 2003

For 2003 assessment roll		
Delete	Add	Revise
To		
		6
(LEGAL, ACREAGE)		

Assessor's Map
Kenai Peninsula Borough

ALASKA STATE LAND SURVEY 97-53 SW0980031
ALASKA STATE LAND SURVEY 99-24 SW2000005
ALASKA STATE LAND SURVEY 99-29 SW2002011

This map is prepared for Kenai Peninsula Borough Assessing Dept. use only and is not intended for conveyance nor is it a survey.
Note- Assessor's block Numbers Shown in Ellipses
Assessor's Parcel Numbers Shown in Circles