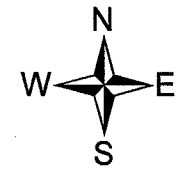
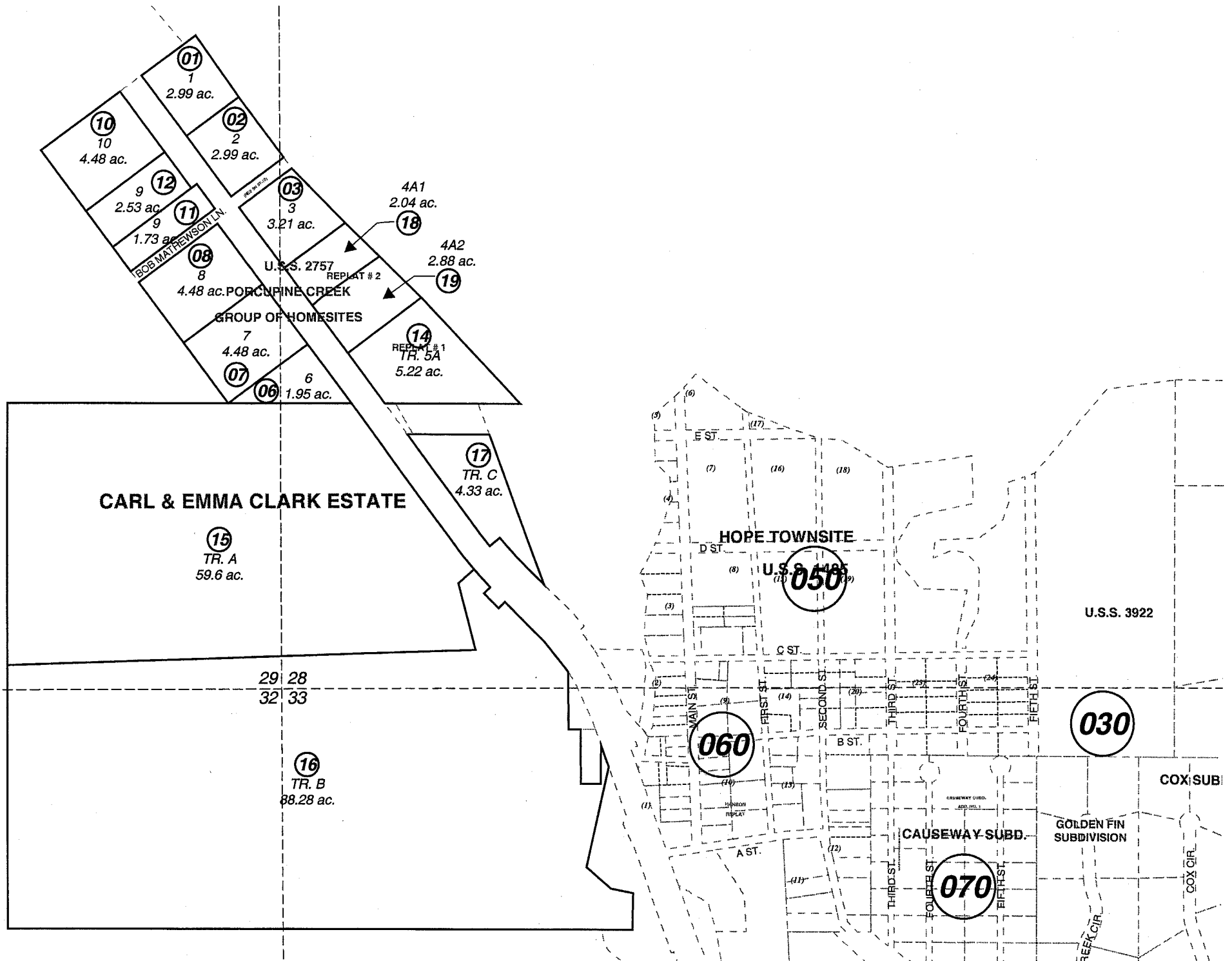


030



JUNE 16, 2003

For 2004 assessment roll		
Delete	Add	Revise
To		
13	18,19	

Assessor's Map
Kenai Peninsula Borough

US SURVEY 2757 SW0002757
 PORCUPINE CREEK HOMESITES REPLAT #1 SW0970025
 CARL & EMMA CLARK ESTATE SW2001008
 PORCUPINE CREEK HOMESITES REPLAT #2 SW2003001

This map is prepared for Kenai Peninsula Borough Assessing Dept. use only and is not intended for conveyance nor is it a survey.
 Note- Assessor's block Numbers Shown in Ellipses
 Assessor's Parcel Numbers Shown in Circles