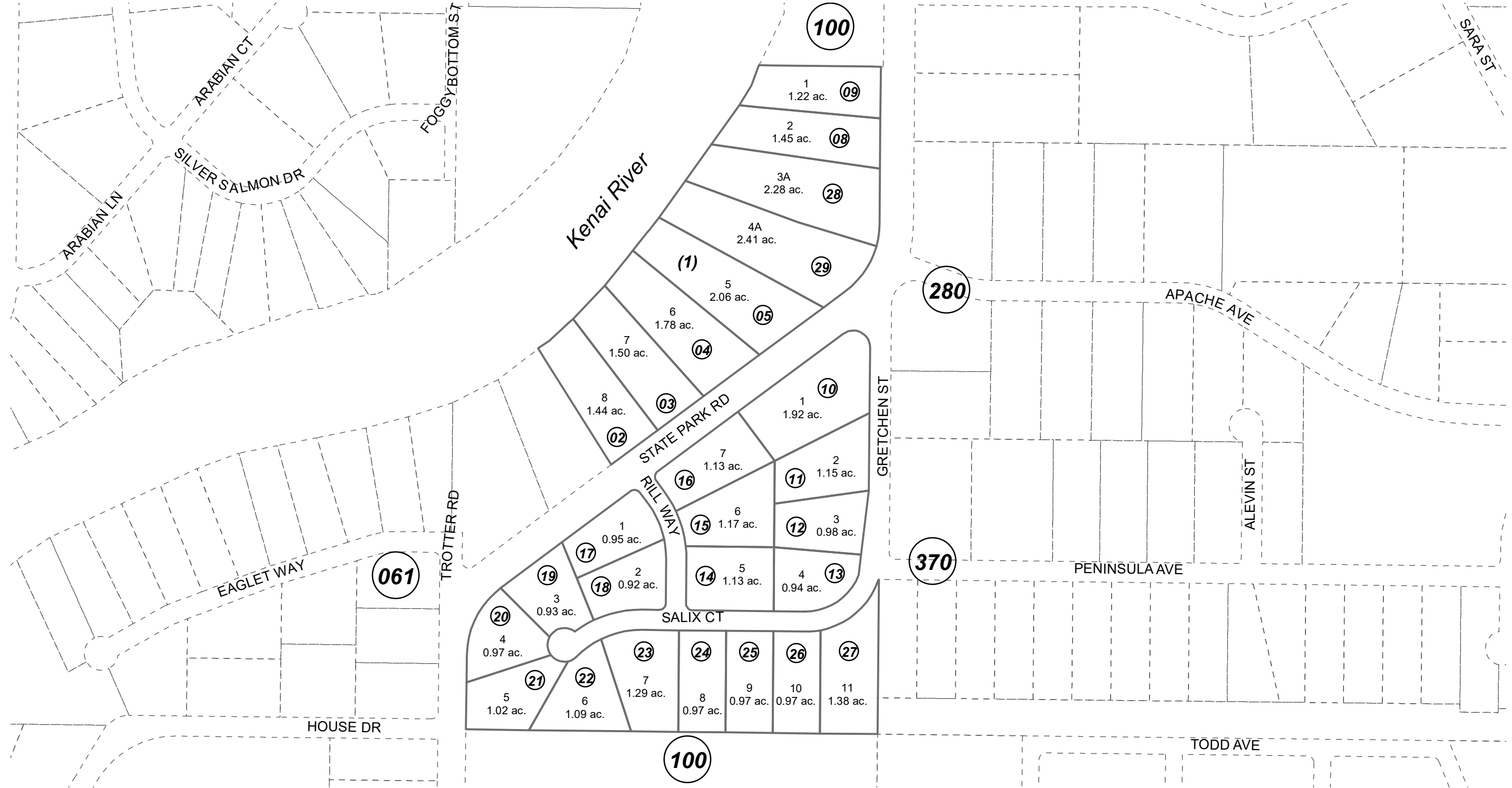
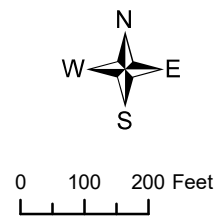


POR. W1/2 NW1/4 SEC. 18, T05N, R08W, S.M.

066-103



OCTOBER 24, 2022



For 2023 assessment roll		
Delete	Add	Revise
	To	
06,07	28,29	

Assessor's Map
Kenai Peninsula Borough

TROTTER SUB RILL RIVER ADDN KN2001010
TROTTER SUB RILL RIVER ADDN PART 2 KN2011044
TROTTER SUB RILL RIVER 2022 REPLAT KN2022059

This map is prepared for Kenai Peninsula Borough Assessing Dept. use only and is not intended for conveyance nor is it a survey.

Note- Assessor's block Numbers Shown in Elipses
Assessor's Parcel Numbers Shown in Circles