

POR. SEC. 24, T05N, R09W, S.M.

066-080

**BK
063**

KENAI RIVER

RIVER BEND RIDGE SUBA

SEC. 23
SEC. 24

HOFSETH
ADDN

RIVER BEND DR.

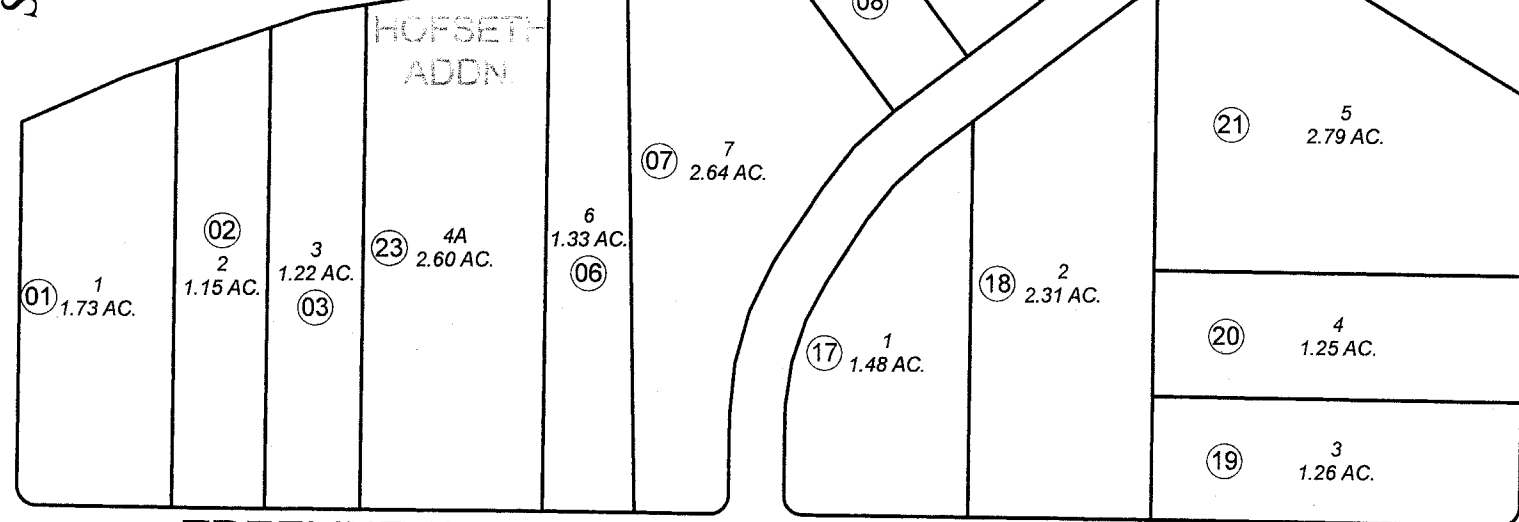
090

090

090

480

260



TREELINE AVE.

RIVER VIEW TERRACE DR



DECEMBER 27, 2007

For 2008 assessment roll		
Delete	Add	Revise
To		
4,5	23	

Assessor's Map
Kenai Peninsula Borough

RIVER BEND RIDGE SUB PART 1 □ KN0740081
RIVER BEND RIDGE SUB PART 2 & LOT 7 □ KN0750084
RIVER BEND RIDGE SUB HOFSETH ADDN □ KN2007138

This map is prepared for Kenai Peninsula Borough Assessing Dept. use only and is not intended for conveyance nor is it a survey.
Note- Assessor's block Numbers Shown in Ellipses
Assessor's Parcel Numbers Shown in Circles