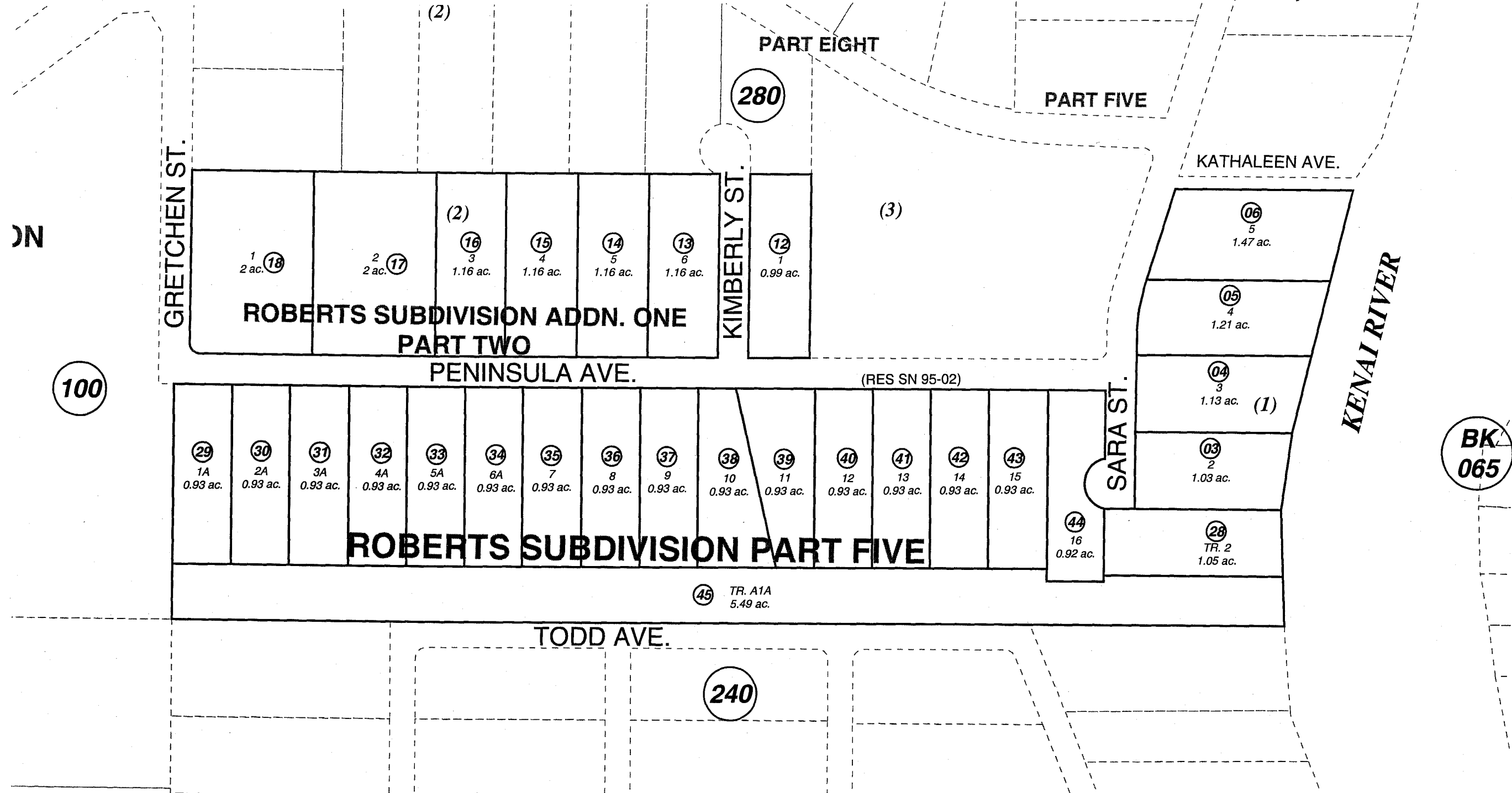


POR. S1/2 N1/2 SEC. 18, T05N, R08S, S.M.

066-370



JANUARY 5, 2005

For 2005 assessment roll		
Delete	Add	Revise
	To	
20-25	29-45	
27		
19		

Assessor's Map
Kenai Peninsula Borough

ROBERTS SUB □ KN0750134
 ROBERTS SUB ADDN NO 1 PART 1 □ KN0780050
 ROBERTS SUB ADDN NO 1 PART 2 □ KN0790030
 ROBERTS SUB PIERCE ADDN □ KN2000022
 ROBERTS SUB PART THREE □ KN2002076
 ROBERTS SUB PART FOUR KN2004012
 ROBERTS SUB PART FIVE KN2004127

Note- Assessor's block Numbers Shown in Elipses
 Assessor's Parcel Numbers Shown in Circles

This map is prepared
 for Kenai Peninsula
 Borough Assessing Dept.
 use only and is not
 intended for conveyance
 nor is it a survey.