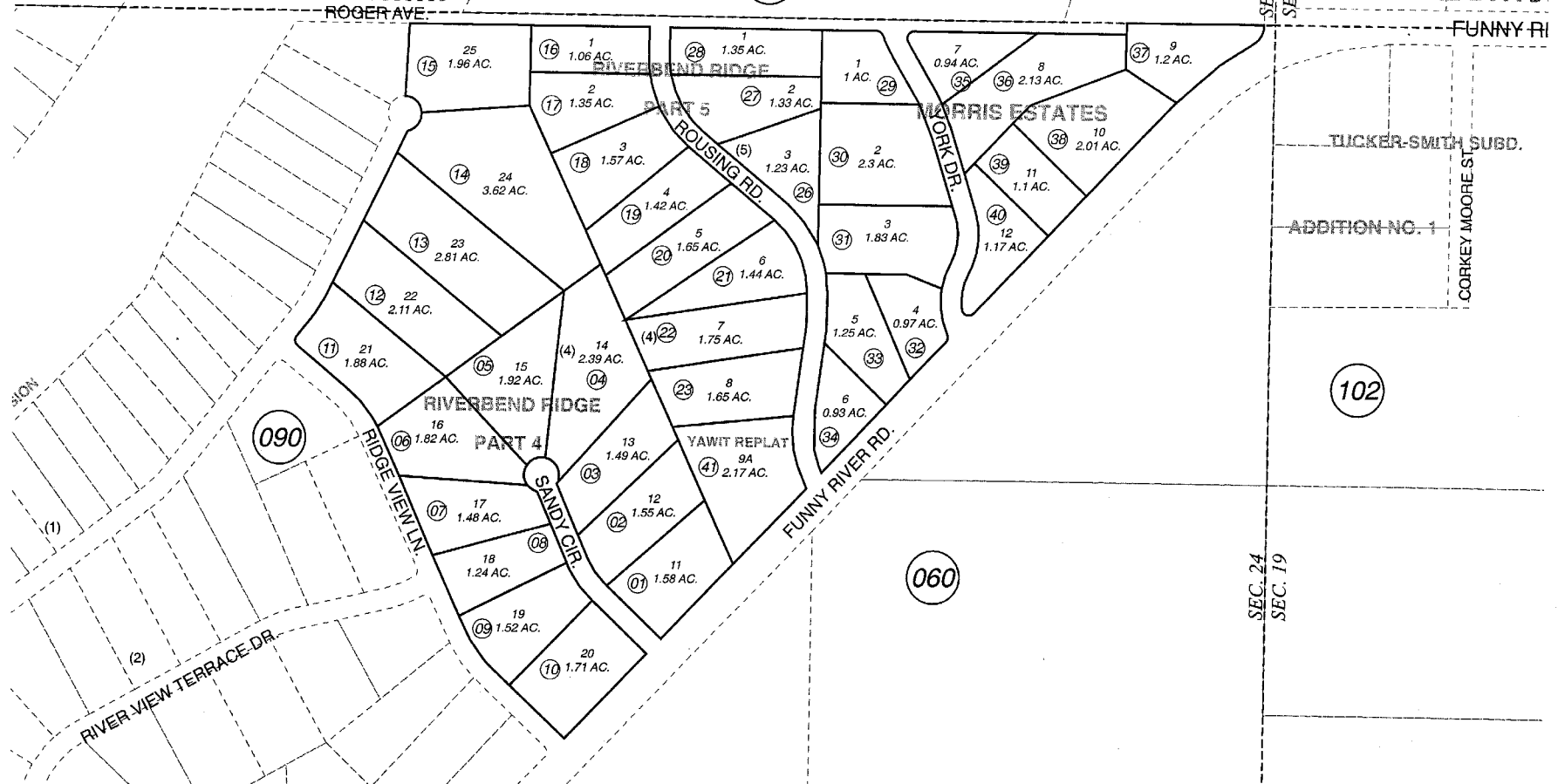


POR. SEC. 24, T05N, R09W, S.M.

340

SEC. 13
SEC. 18 066-310

ADDITION



NOVEMBER 9, 2005

For 2006 assessment roll		
Delete	Add	Revise
To		
24,25	41	



Assessor's Map
Kenai Peninsula Borough

RIVER BEND RIDGE SUB PART 4 KN0770030
RIVER BEND RIDGE SUB PART 5 KN0780126
MORRIS ESTATES SUB KN0970016
RIVER BEND RIDGE SUB YAWIT REPLAT KN2005089

This map is prepared for Kenai Peninsula Borough Assessing Dept. use only and is not intended for conveyance nor is it a survey.
Note- Assessor's block Numbers Shown in Ellipses
Assessor's Parcel Numbers Shown in Circles