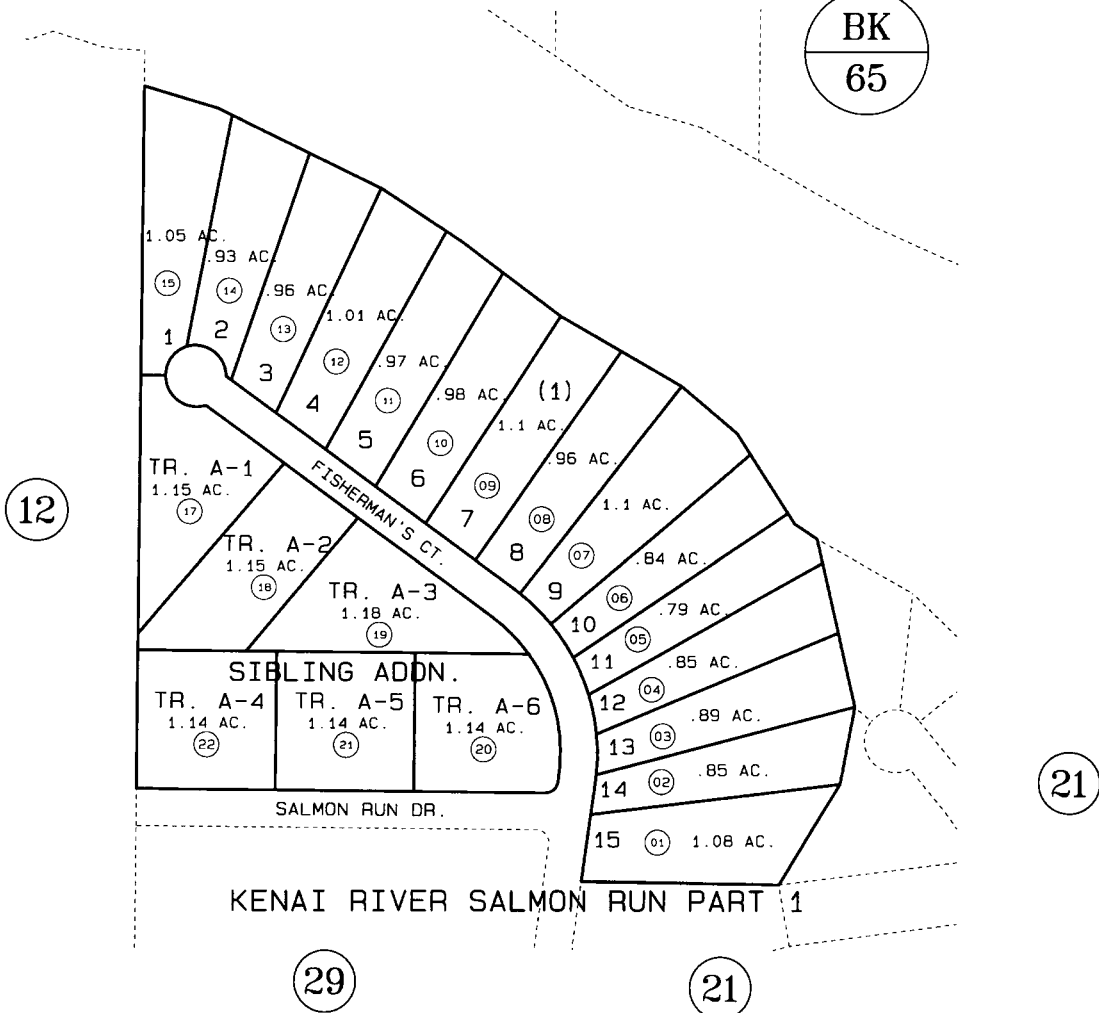


PORTION OF SEC. 27, T5N, R8W, SEWARD MERIDIAN

066-180

BK
65



DATE: NOV. 8, 1996

FOR 19 97 ASSESSMENT ROLL		
DELETE	ADD	REVISED
TO		
16	17-22	

Assessor's Map
 Kenai Peninsula Borough

KENAI RIVER SALMON RUN PART 1 AMENDED KN740042
 KENAI RIVER SALMON RUN SIBLING ADDN. KN960051

THIS MAP IS PREPARED
 FOR KENAI PENINSULA
 BOROUGH ASSESSING DEPT.
 USE ONLY AND IS NOT
 INTENDED FOR ANY
 OTHER USE OR REPRESENTATION

NOTE - Assessor's Block Numbers Shown In Ellipses
 Assessor's Parcel Numbers Shown In Circles