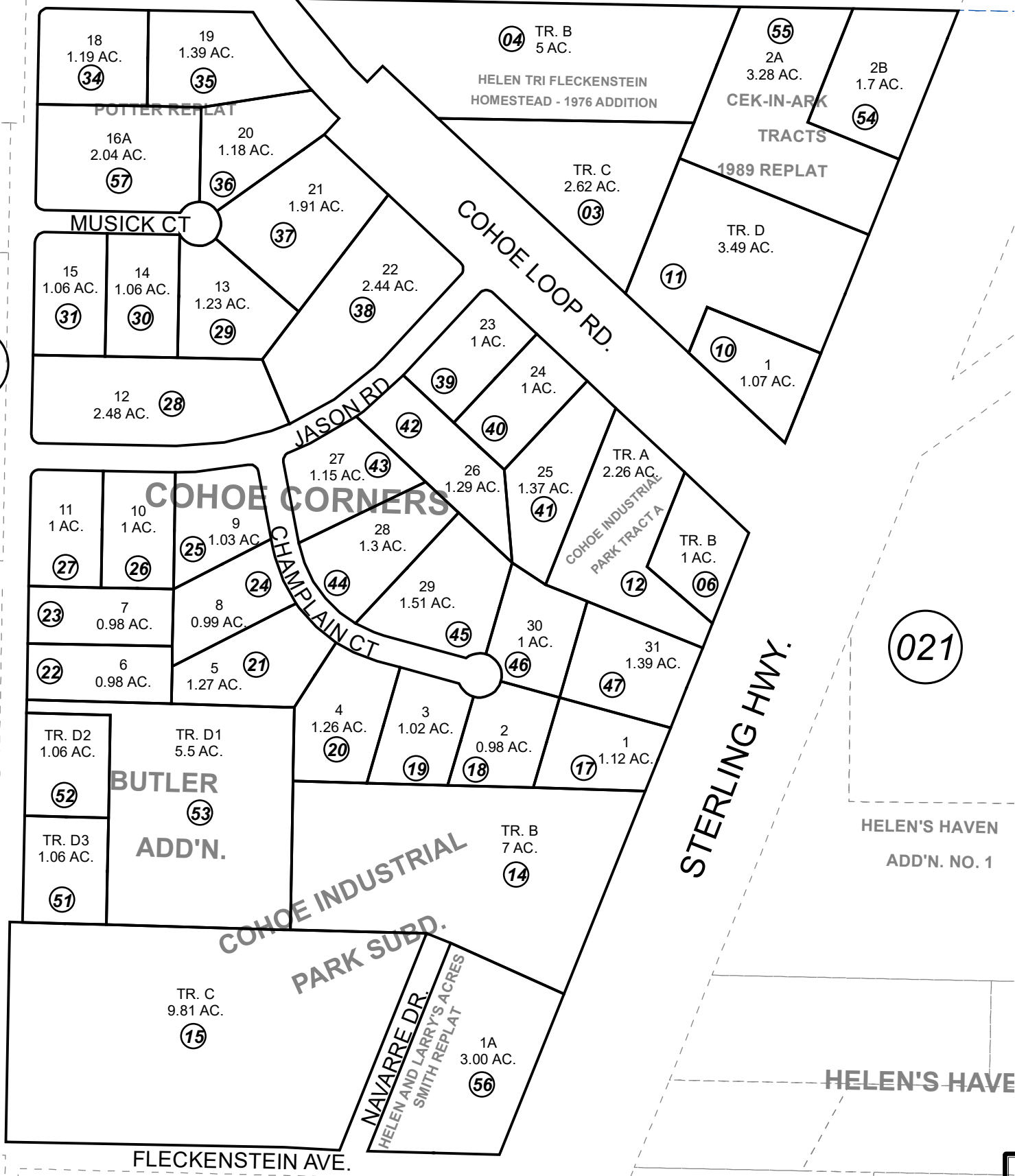


137-250

POR, NE1/4, SEC. 1, T02N, R12W, S.M.

TUBBS/ CRAIG
REPLAT

BK
133



For 2021 assessment roll	
Delete	Add
32,33	57
To	

- KN0001693 HELEN & LARRY'S ACRES SUB
- KN0760084 HELEN & LARRY'S ACRES SUB
- KN0770012 HELEN TRI FLECKENSTEIN HOMESTEAD SUB
- KN0810025 FLECKENSTEIN DEED OF RECORD BOUNDARY SURVEY
- KN0820001 COHOE INDUSTRIAL PARK SUB
- KN0850118 COHOE CORNERS SUB
- KN0860220 COHOE INDUSTRIAL PARK SUB BUTLER ADDN
- KN0890023 CEK-IN-ARK TRACTS SUB 1989 REPLAT
- KN2018058 HELEN & LARRY'S ACRES SUB SMITH REPLAT
- KN2020049 COHOE CORNERS POTTER REPLAT

This map is prepared for Kenai Peninsula Borough Assessing Dept. use only and is not intended for conveyance nor is it a survey.

Note- Assessor's block Numbers Shown in Ellipses Assessor's Parcel Numbers Shown in Circles

Assessor's Map
Kenai Peninsula Borough

ATKINSON
WIRTH 1988
NO.2, TR. B-4

ATKINSON SUBD. NO. 2

STEELE REPLAT

CEKIN CT.

COLLINS DR.

FRANK'S SUBD.

HELEN'S HAVEN
ADD'N. NO. 1

COHOE INDUSTRIAL
PARK SUBD.

BUTLER
ADD'N.

COHOE CORNERS

COHOE LOOP RD.

MUSICK CT

JASON RD.

STERLING HWY.

NAVARRE DR.
HELEN AND LARRY'S ACRES
SMITH REPLAT

FLECKENSTEIN AVE.

JUBD.

021

251

260

021