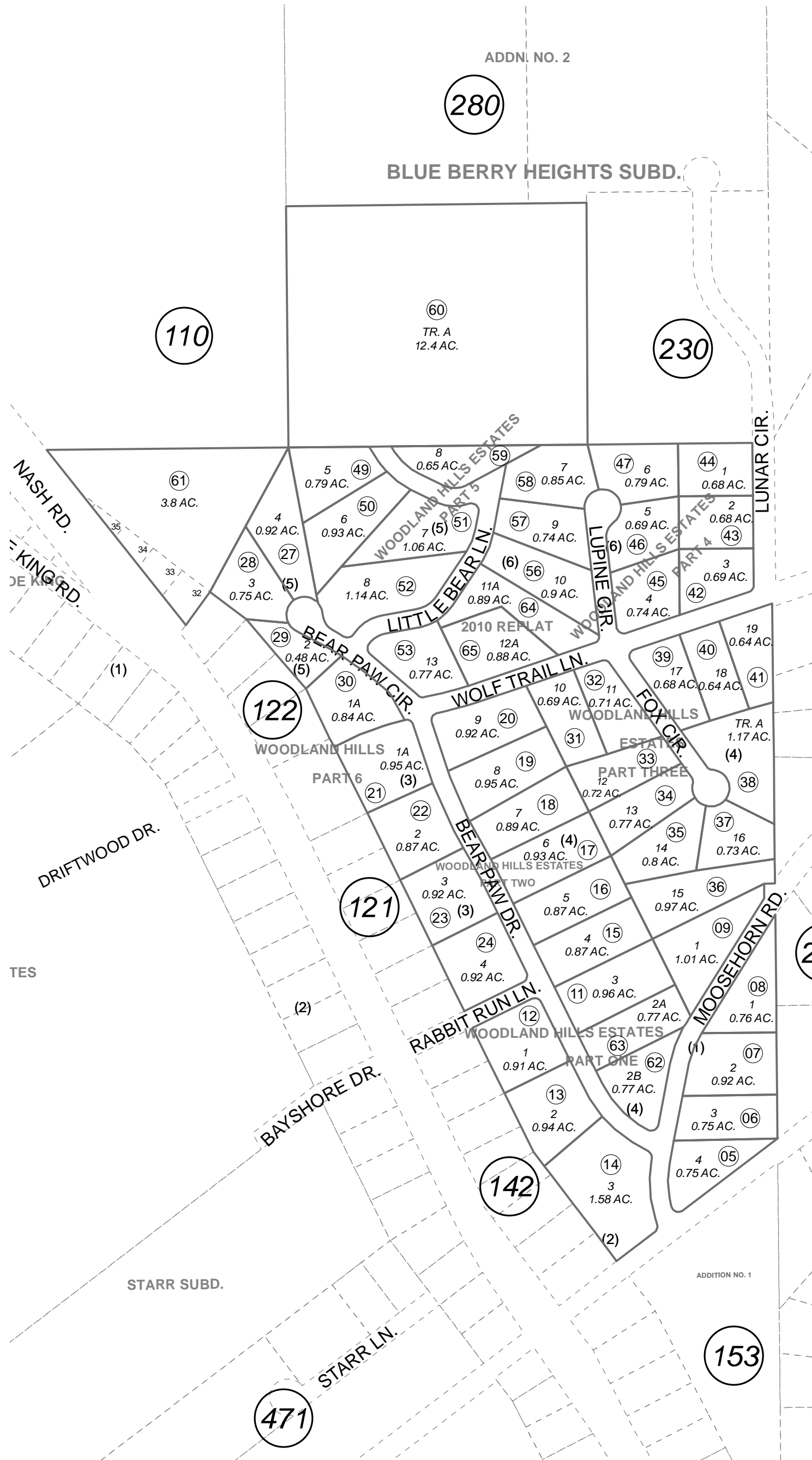


145-230

POR. W1/2 SEC. 36, T01N, R01W, S.M.



- WOODLAND HILLS ESTATES SUB PART 1 SW0760009
- WOODLAND HILLS ESTATES SUB PT 1 SW0760009
- WOODLAND HILLS ESTATES SUB PART 2 SW0770007
- WOODLAND HILLS ESTATES SUB PART 2 SW0770007
- WOODLAND HILLS ESTATES SUB PART 3 SW0780007
- WOODLAND HILLS ESTATES SUB PART 4 SW0800008
- WOODLAND HILLS ESTATES SUB PT 4 SW0800008
- WOODLAND HILLS ESTATES SUB PART 5 SW0840001
- WOODLAND HILLS ESTATES SUB PT 5 SW0840001
- WOODLAND HILLS ESTATES SUB TIPPIT ADDN SW0860008
- WOODLAND HILLS ESTATES SUB PART 6 SW0880006
- WOODLAND HILLS ESTATES SUB PT 6 SW0880006
- WOODLAND HILLS ESTATES 2010 REPLAT SW2013007



0 100 200 Feet

SEPTEMBER 5, 2013

For 2014 assessment roll	
Delete	Add
	Revise
To	
54.55	64.65

This map is prepared for Kenai Peninsula Borough Assessing Dept. use only and is not intended for conveyance nor is it a survey.

Note- Assessor's block Numbers Shown in Ellipses Assessor's Parcel Numbers Shown in Circles

Assessor's Map Kenai Peninsula Borough