

POR. SEC. 34, T01N, R01W & POR. SEC. 3, T01S, R01W, S.M.

145-200

BENSON DR

190

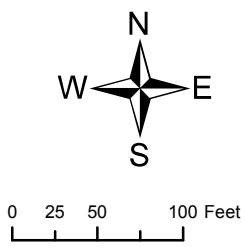
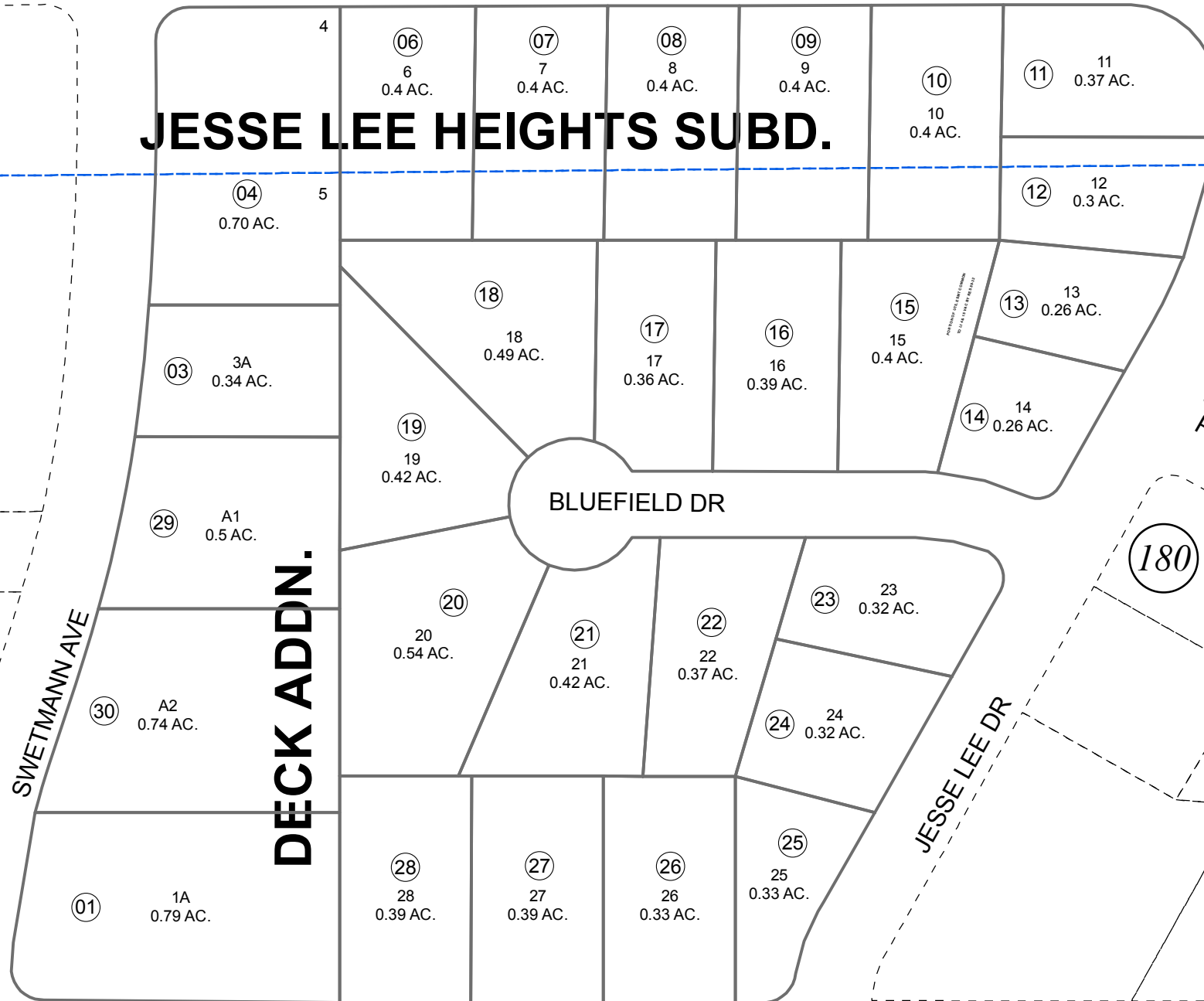
**JESSE LEE HEIGHTS SUBD.**

**NO. 5**

**ADDN. NO. 4**

023

**SEWARD  
TOWNHOMES  
ONDOMINIUMS**



AUGUST 19, 2016

For 2017 assessment roll		
Delete	Add	Revise
To		04, 19, 20
		(ACREAGE REVISION)

Assessor's Map  
Kenai Peninsula Borough

JESSE LEE HEIGHTS SW0000050  
 JESSE LEE HEIGHTS ADDN 1 SW0720996  
 JESSE LEE HEIGHTS DECK ADDN SW0930015

Note- Assessor's block Numbers Shown in Elipses  
 Assessor's Parcel Numbers Shown in Circles

This map is prepared for Kenai Peninsula Borough Assessing Dept. use only and is not intended for conveyance nor is it a survey.