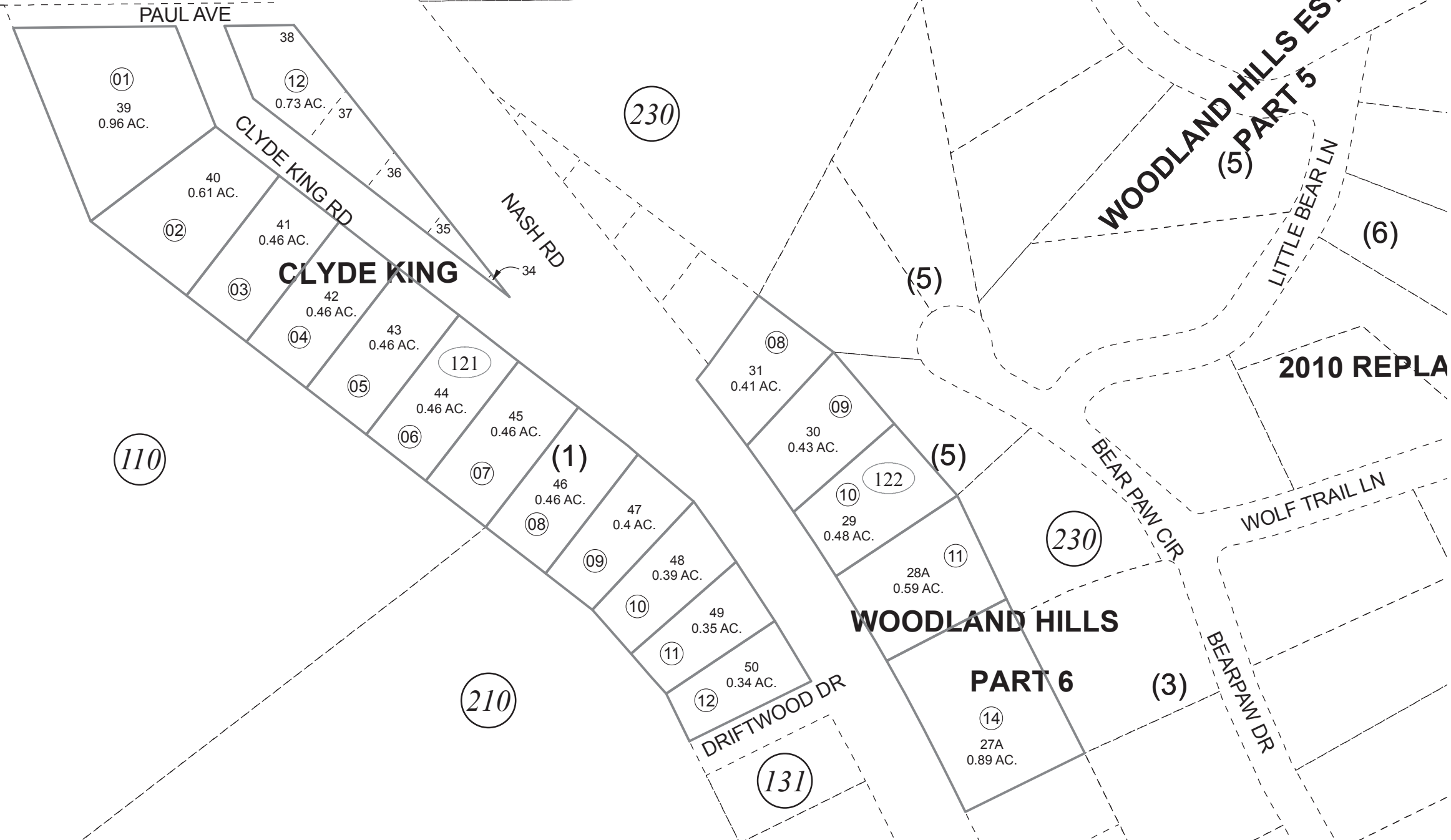


SEC 35
SEC 36



NOVEMBER 4, 2016

For 2017 assessment roll		
Delete	Add	Revise
To		12110-12 12208-09, 12212
		(ACREAGE CHANGE)



0 50 100 200 Feet

Assessor's Map
Kenai Peninsula Borough

CLYDE KING SUB SW0000020

This map is prepared for Kenai Peninsula Borough Assessing Dept. use only and is not intended for conveyance nor is it a survey.

Note- Assessor's block Numbers Shown in Elipses
Assessor's Parcel Numbers Shown in Circles