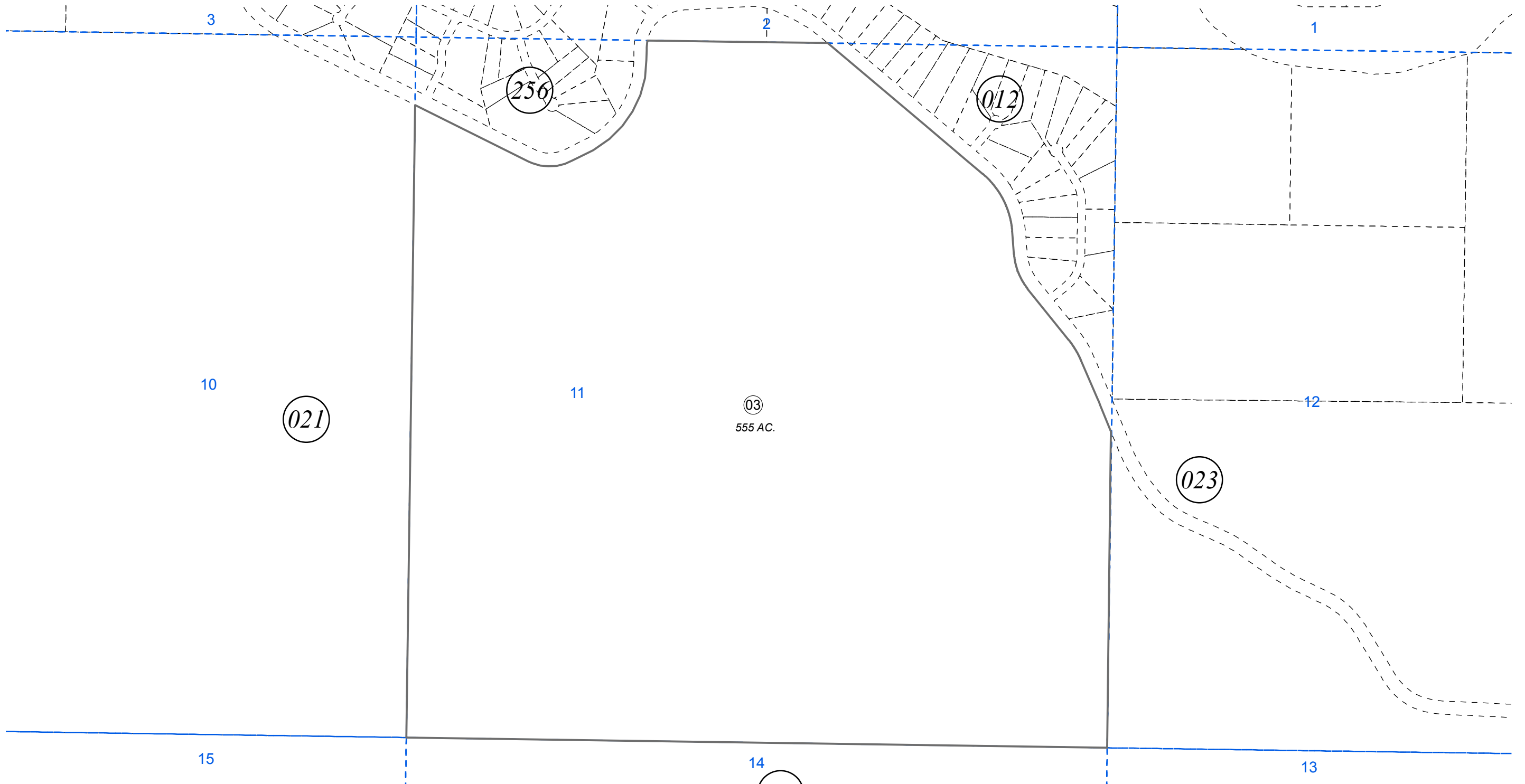


POR. SEC. 11, T04N, R10W, S.M.

135-022



0 250 500 1,000 Feet

JANUARY 15, 2015

For 2015 assessment roll		
Delete	Add	Revise
	To	
01	135-012+	

Assessor's Map  
Kenai Peninsula Borough

This map is prepared for Kenai Peninsula Borough Assessing Dept. use only and is not intended for conveyance nor is it a survey.

Note- Assessor's block Numbers Shown in Ellipses  
Assessor's Parcel Numbers Shown in Circles