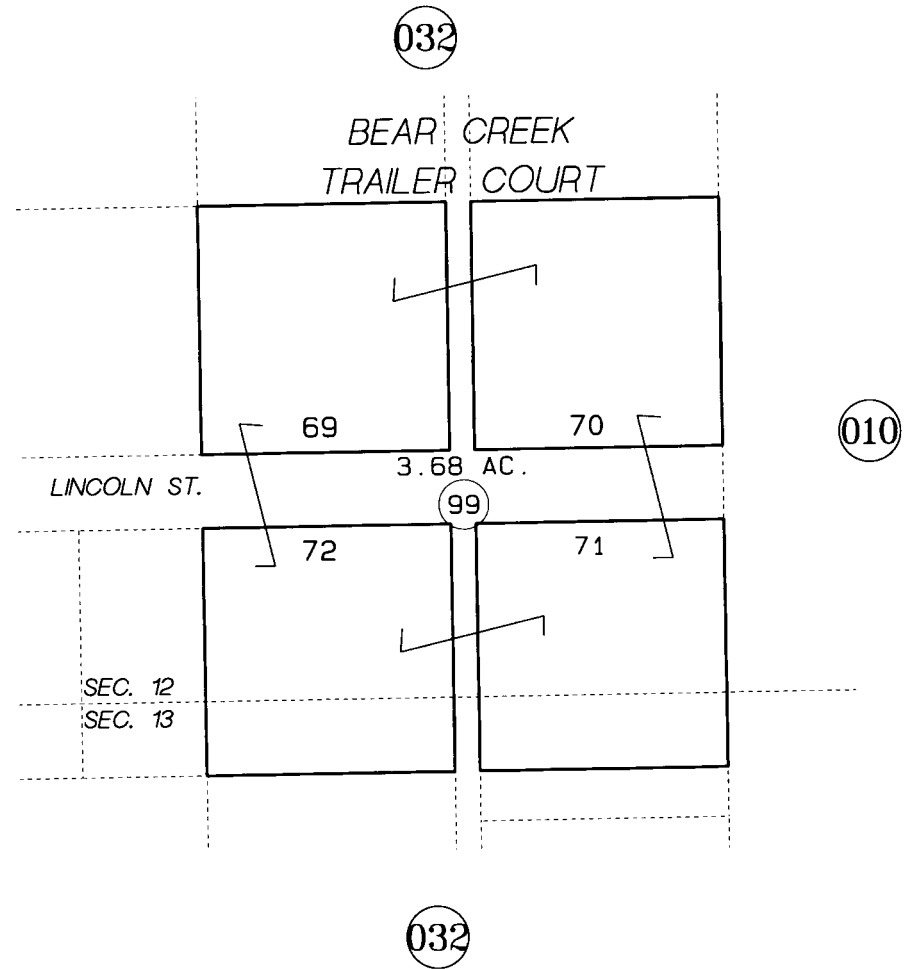


PORTION OF SEC. 12, 13, T1N, R1W, SEWARD MERIDIAN

125-035

- (14) SPACE 14 (36) SPACE 36 (57) SPACE 46
- (15) SPACE 15 (37) SPACE 37 (58) SPACE 47
- (16) SPACE 16 (38) SPACE 38 (59) SPACE 48
- (17) SPACE 17 (39) SPACE 39
- (18) SPACE 18 (40) SPACE 40
- (19) SPACE 19 **R.V. SPACES**
- (20) SPACE 20 (41) SPACE 30
- (21) SPACE 21 (42) SPACE 31
- (22) SPACE 22 (43) SPACE 32
- (23) SPACE 23 (44) SPACE 33
- (24) SPACE 24 (45) SPACE 34
- (25) SPACE 25 (46) SPACE 35
- (26) SPACE 26 (47) SPACE 36
- (27) SPACE 27 (48) SPACE 37
- (28) SPACE 28 (49) SPACE 38
- (29) SPACE 29 (50) SPACE 39
- (30) SPACE 30 (51) SPACE 40
- (31) SPACE 31 (52) SPACE 41
- (32) SPACE 32 (53) SPACE 42
- (33) SPACE 33 (54) SPACE 43
- (34) SPACE 34 (55) SPACE 44
- (35) SPACE 35 (56) SPACE 45



DATE: OCT. 30, 1996
 FOR 19 97 ASSESSMENT ROLL
 DELETE ADD REVISED
 TO
 NEW PAGE

Assessor's Map
 Kenai Peninsula Borough

WOODROW ALASKA SW000008

THIS MAP IS PREPARED FOR KENAI PENINSULA BOROUGH ASSESSING DEPT. USE ONLY AND IS NOT INTENDED FOR ANY OTHER USE OR REPRESENTATION

NOTE - Assessor's Block Numbers Shown In Ellipses
 Assessor's Parcel Numbers Shown In Circles