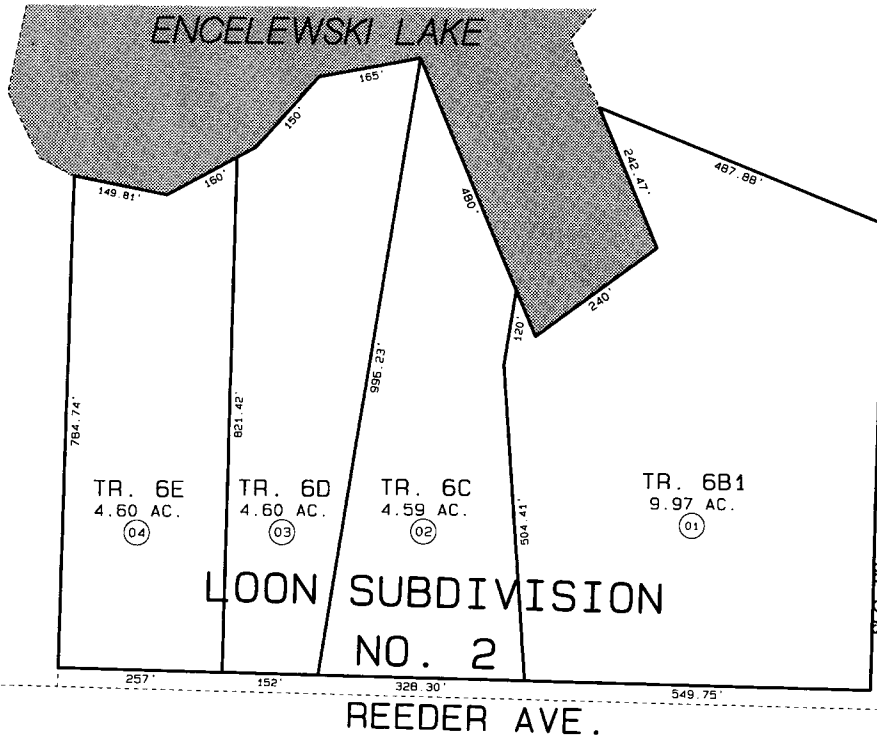


05



05

05

05



DATE: AUG. 20, 1996

FOR 19 97 ASSESSMENT ROLL		
DELETE	ADD	REVISED
TO		
NEW PAGE		

Assessor's Map
Kenai Peninsula Borough

LOON SUBD. NO. 2 KN960009

THIS MAP IS PREPARED
FOR KENAI PENINSULA
BOROUGH ASSESSING DEPT.
USE ONLY AND IS NOT
INTENDED FOR ANY
OTHER USE OR REPRESENTATION

NOTE - Assessor's Block Numbers Shown in Ellipses
Assessor's Parcel Numbers Shown in Circles