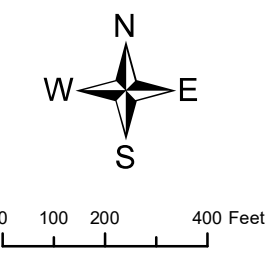
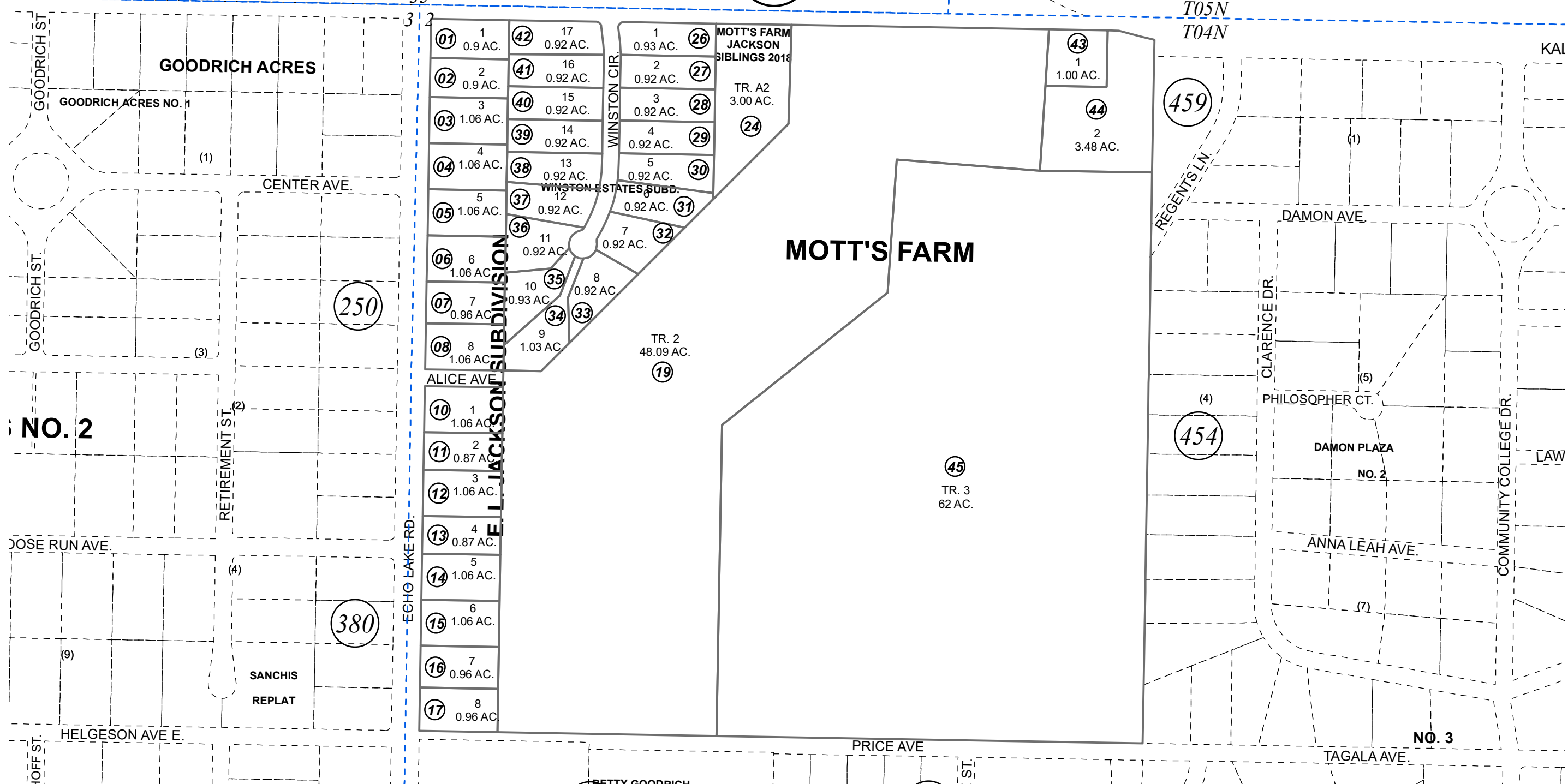


NW 1/4 SEC. 2, T04N, R11W, S.M.

BK
055

131-220



DECEMBER 12, 2022

For 2023 assessment roll		
Delete	Add	Revise
	To	
20	43-45	

Assessor's Map
Kenai Peninsula Borough

E L JACKSON SUB KN0001609
 MOTTS FARM SUB KN2000067
 MOTTS FARM JACKSON SIBLINGS ADDN PHASE 1 KN2016045
 MOTTS FARM JACKSON SIBLINGS 2018 KN2018003
 MOTTS FARM WINSTON ESTATES SUB KN2018062
 MOTTS SUB 2022 ADDN KN2022074

This map is prepared for Kenai Peninsula Borough Assessing Dept. use only and is not intended for conveyance nor is it a survey.
 Note- Assessor's block Numbers Shown in Ellipses
 Assessor's Parcel Numbers Shown in Circles