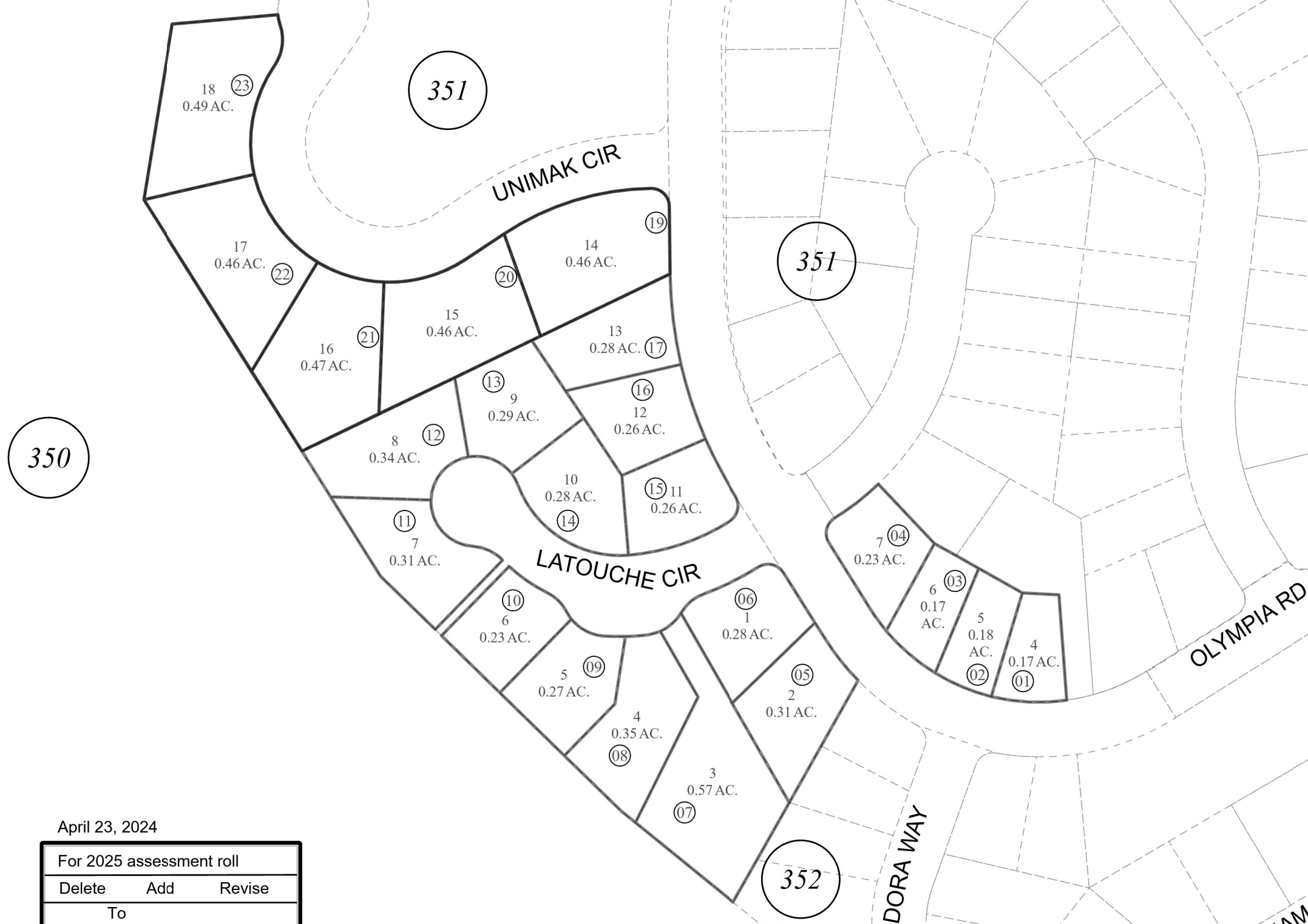


POR. SE1/4 SEC. 33, T01N, R01W, S.M.

145-353



350

351

351

352



0 70 140 280 Feet

April 23, 2024

For 2025 assessment roll		
Delete	Add	Revise
To		
18	19-23	

Assessor's Map  
Kenai Peninsula Borough

GATEWAY SUB AMENDED  
2022 LINDQUIST ADDN SW2024003

This map is prepared for Kenai Peninsula Borough Assessing Dept. use only and is not intended for conveyance nor is it a survey.  
Note- Assessor's block Numbers Shown in Elipses  
Assessor's Parcel Numbers Shown in Circles