

133-380

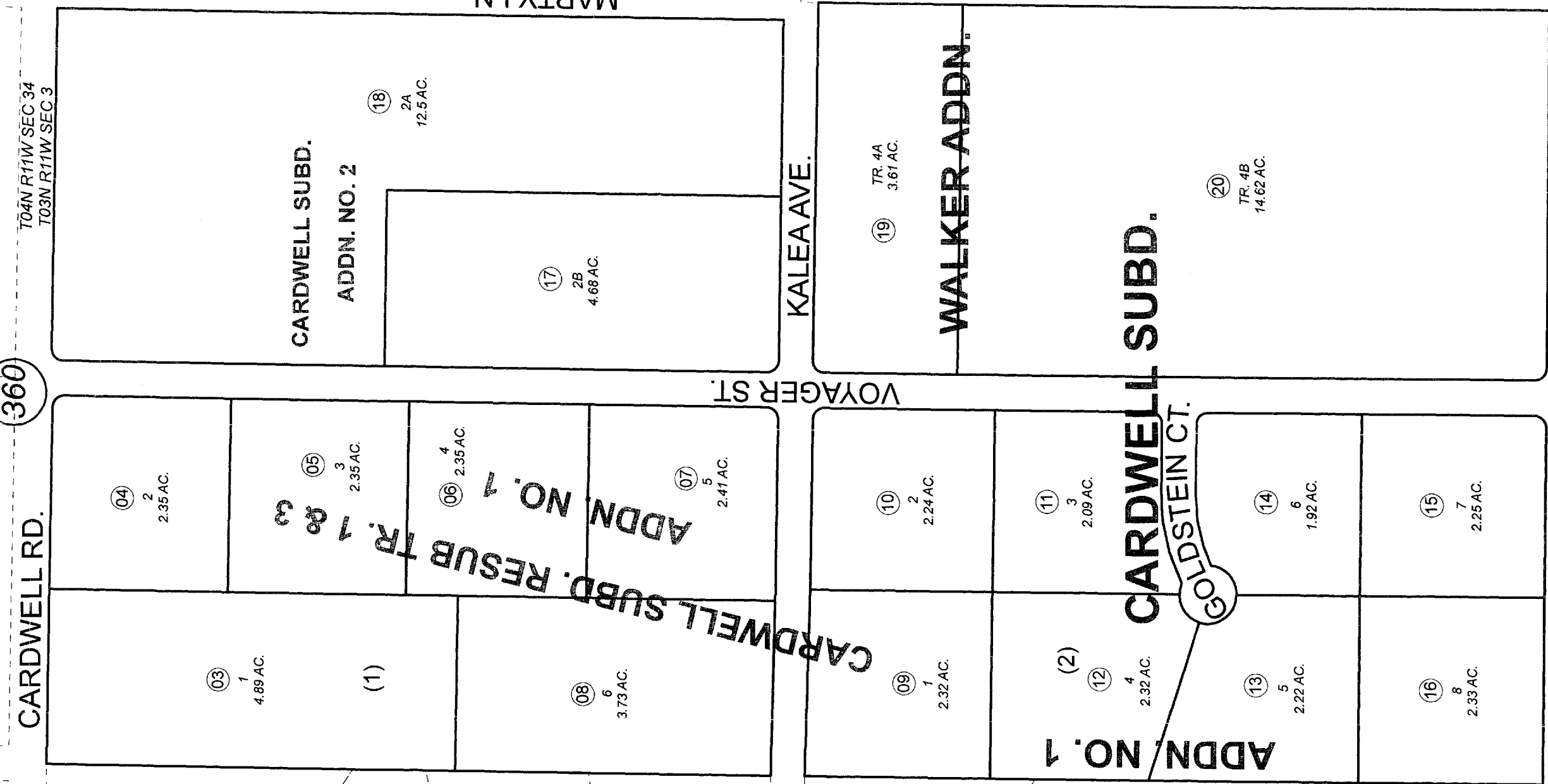
W1/2 NE1/4 SEC. 3, T03N, R11W, S.M.

381

360

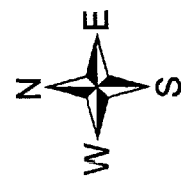
040

040



For 2011 assessment roll	Delete	Add	Revise
To	01	19,20	

DECEMBER 6, 2010



Assessor's Map  
Kenai Peninsula Borough

CARDWELL SUB KN0720013  
 CARDWELL SUB ADDN NO 1 KN0770038  
 CARDWELL SUB RESUB TRACTS 1 & 3 ADDN NO 1 KN0770147  
 CARDWELL SUB WALKER ADDN KN2010067

Note- Assessor's block Numbers Shown in Ellipses  
Assessor's Parcel Numbers Shown in Circles

This map is prepared  
 for Kenai Peninsula  
 Borough Assessing Dept.  
 use only and is not  
 intended for conveyance  
 nor is it a survey.