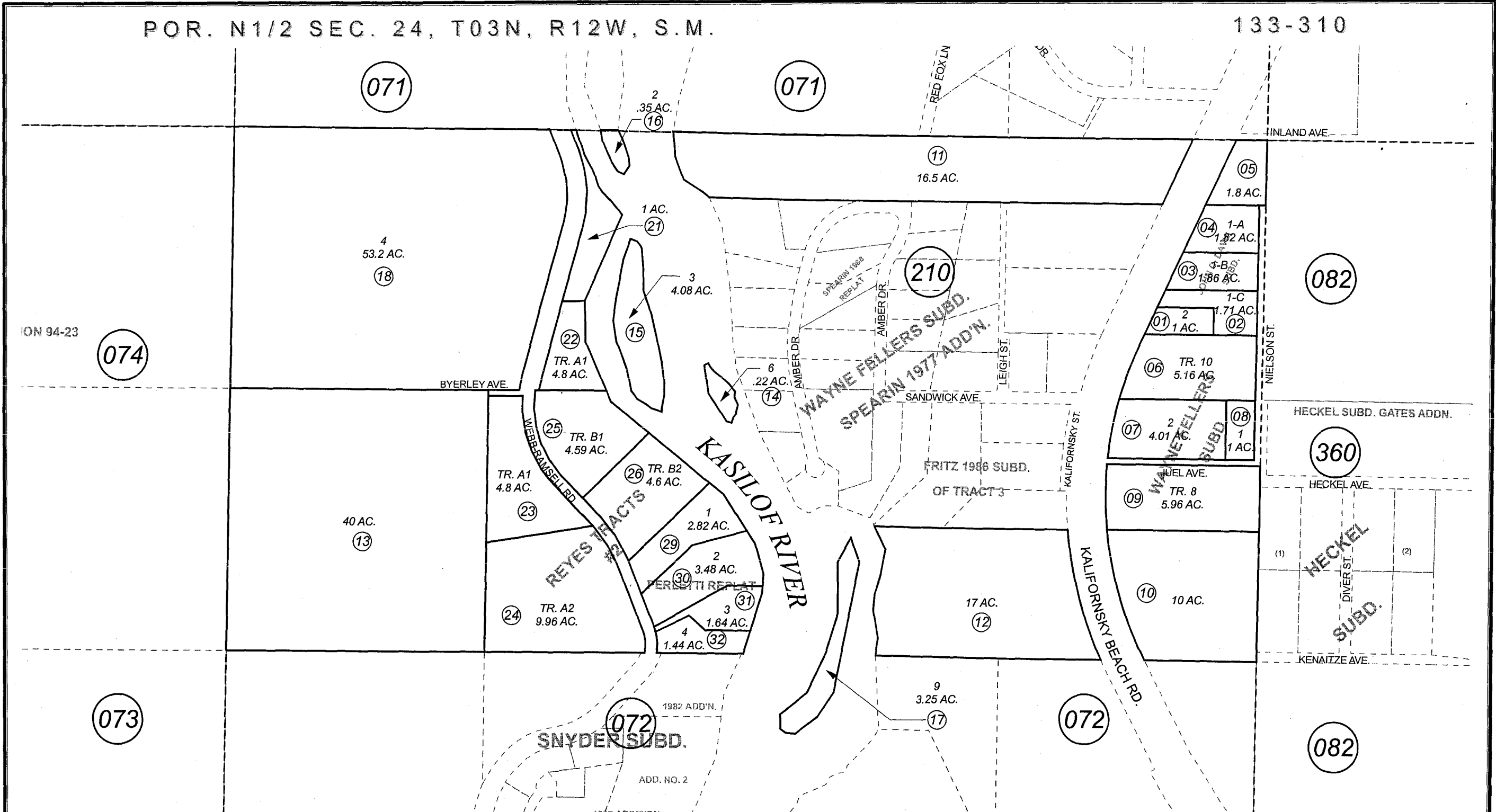


POR. N1/2 SEC. 24, T03N, R12W, S.M.

133-310



MAY 29, 2007

| For 2008 assessment roll | | |
|--------------------------|-------|--------|
| Delete | Add | Revise |
| | To | |
| 27,28 | 29-32 | |



Assessor's Map
Kenai Peninsula Borough

WAYNE FELLERS SUB 1970 ADDN □ KN0001717
 JOHN C DAVIS SUB □ KN0001773
 WAYNE FELLERS SUB 1974 ADDN □ KN0740096
 WAYNE FELLERS SUB NIELSEN 1974 □ KN0740104
 JOHN C DAVIS RESUB OF LOT 1 □ KN0760017
 REYES TRACTS #2 □ KN0970041
 REYES TRACTS PERLETTI REPLAT □ KN2007009

This map is prepared for Kenai Peninsula Borough Assessing Dept. use only and is not intended for conveyance nor is it a survey.
 Note- Assessor's block Numbers Shown in Ellipses
 Assessor's Parcel Numbers Shown in Circles