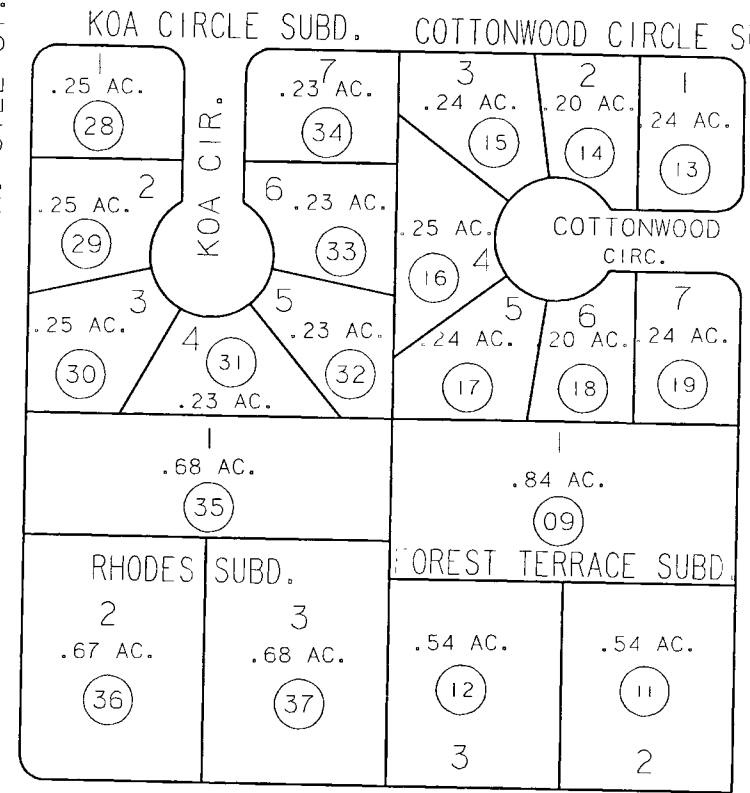
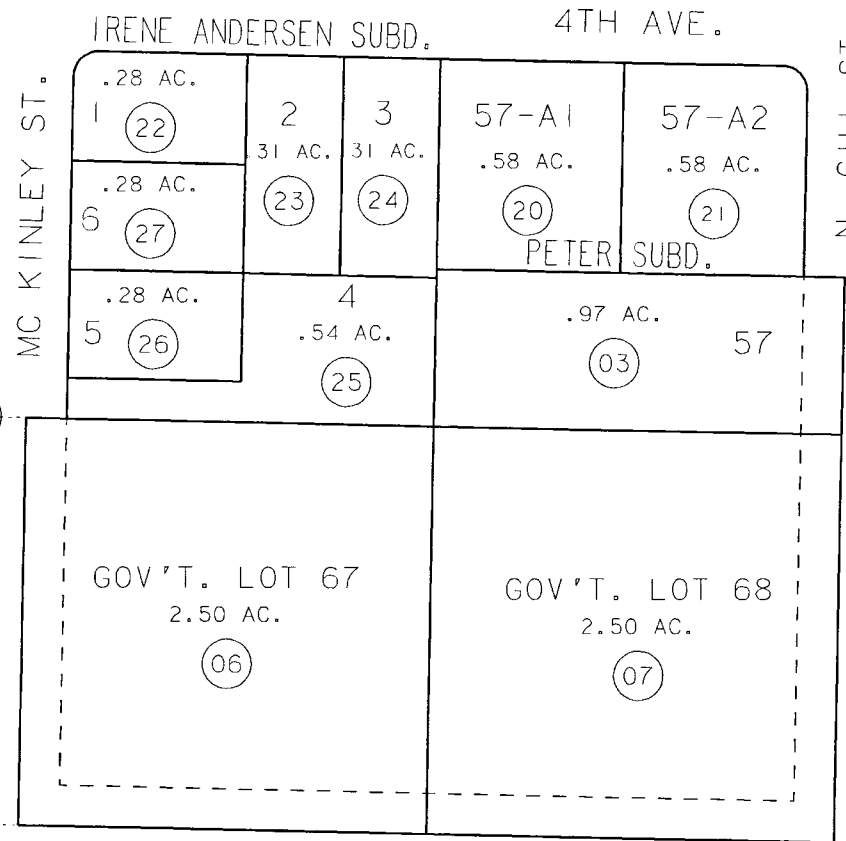


PORTION OF SEC. 31, T6N, R11W, SEWARD MERIDIAN

043-070



6

3

8

11



DATE: DEC. 11, 1993

FOR 1994 ASSESSMENT ROLL		
DELETE	ADD	REVISED
TO		
8	35-37	

NOTE - Assessor's Block Numbers Shown In Ellipses Assessor's Map
 Assessor's Parcel Numbers Shown In Circles Kenai Peninsula Borough

FOREST TERRACE
 COTTONWOOD CIRCLE
 PETER
 IRENE ANDERSON
 KOA CIRCLE (REVISED) BLM LOT 56
 RHODES

KN001414
 KN770064
 KN770090
 KN830124
 KN860032
 KN930061

THIS MAP IS PREPARED FOR KENAI PENINSULA BOROUGH ASSESSING DEPT. USE ONLY AND IS NOT INTENDED FOR ANY OTHER USE OR REPRESENTATION