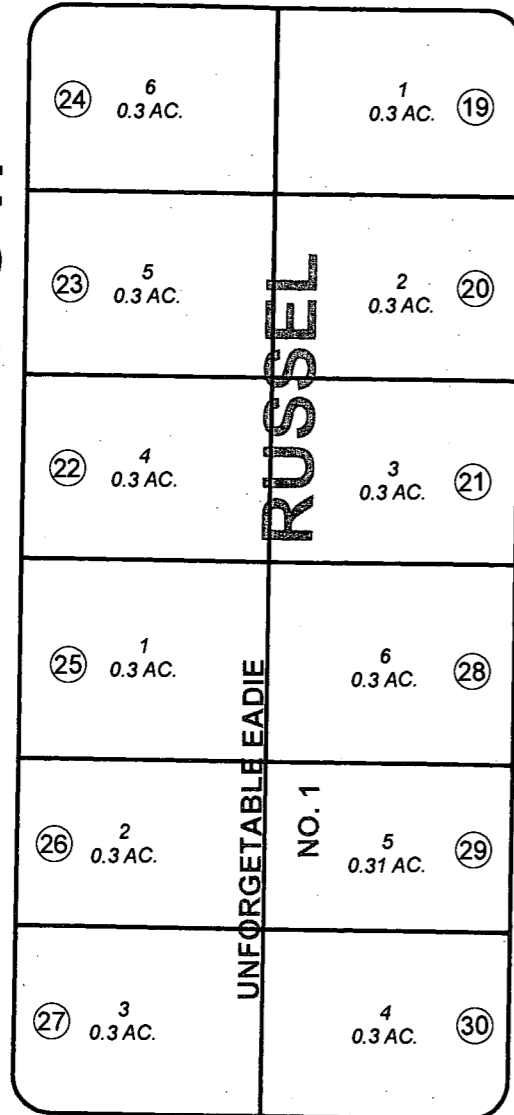


FIFTH AVE.

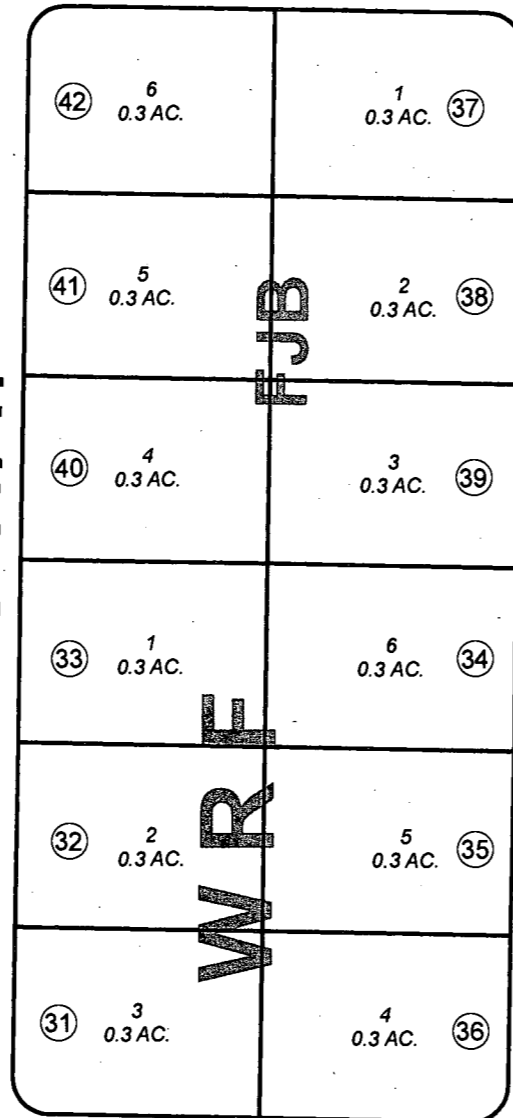
(010)

MCKINLEY ST.

(020)

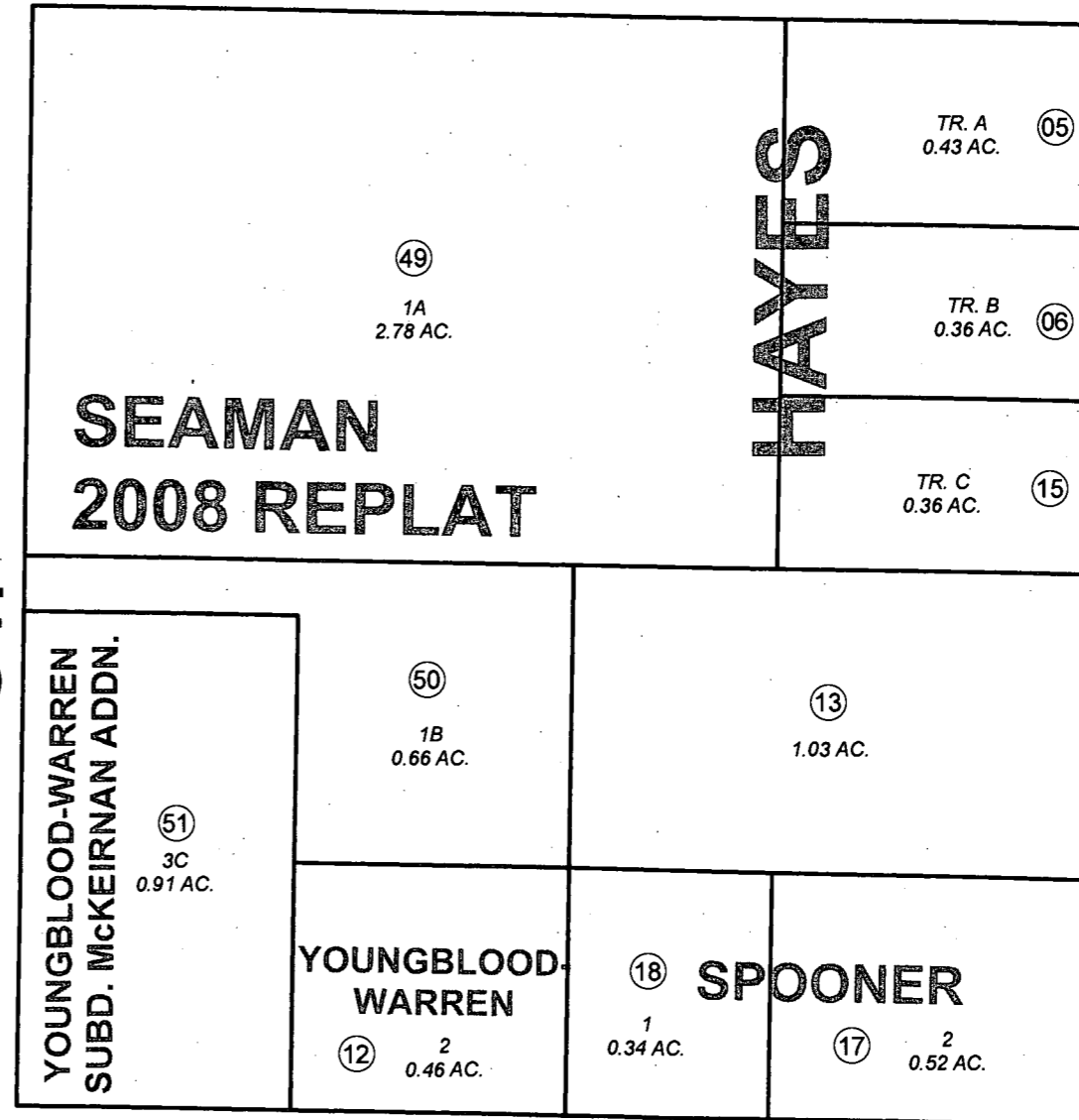


EADIE'S WAY



N. GILL ST.

(070)



(040)

O

FOURTH AVE.



DECEMBER 14, 2012

For 2013 assessment roll		
Delete	Add	Revise
To		
43-46	51	

Assessor's Map
Kenai Peninsula Borough

HAYES SUB KN0000962
 YOUNGBLOOD-WARREN SUB KN0001383
 SPOONER SUB KN0810123
 RUSSEL SUB KN0830289
 W R F SUB KN0840100
 UNFORGETTABLE EADIE SUB NO 1 KN0840106
 F J B SUB KN0840270
 YOUNGBLOOD-WARREN SUB NO 2 KN0860004
 SEAMAN SUB 2008 REPLAT KN2008078
 YOUNGBLOOD-WARREN SUB MCKEIRNAN ADDN KN2012086

This map is prepared for Kenai Peninsula Borough Assessing Dept. use only and is not intended for conveyance nor is it a survey.
 Note- Assessor's block Numbers Shown in Elipses
 Assessor's Parcel Numbers Shown in Circles