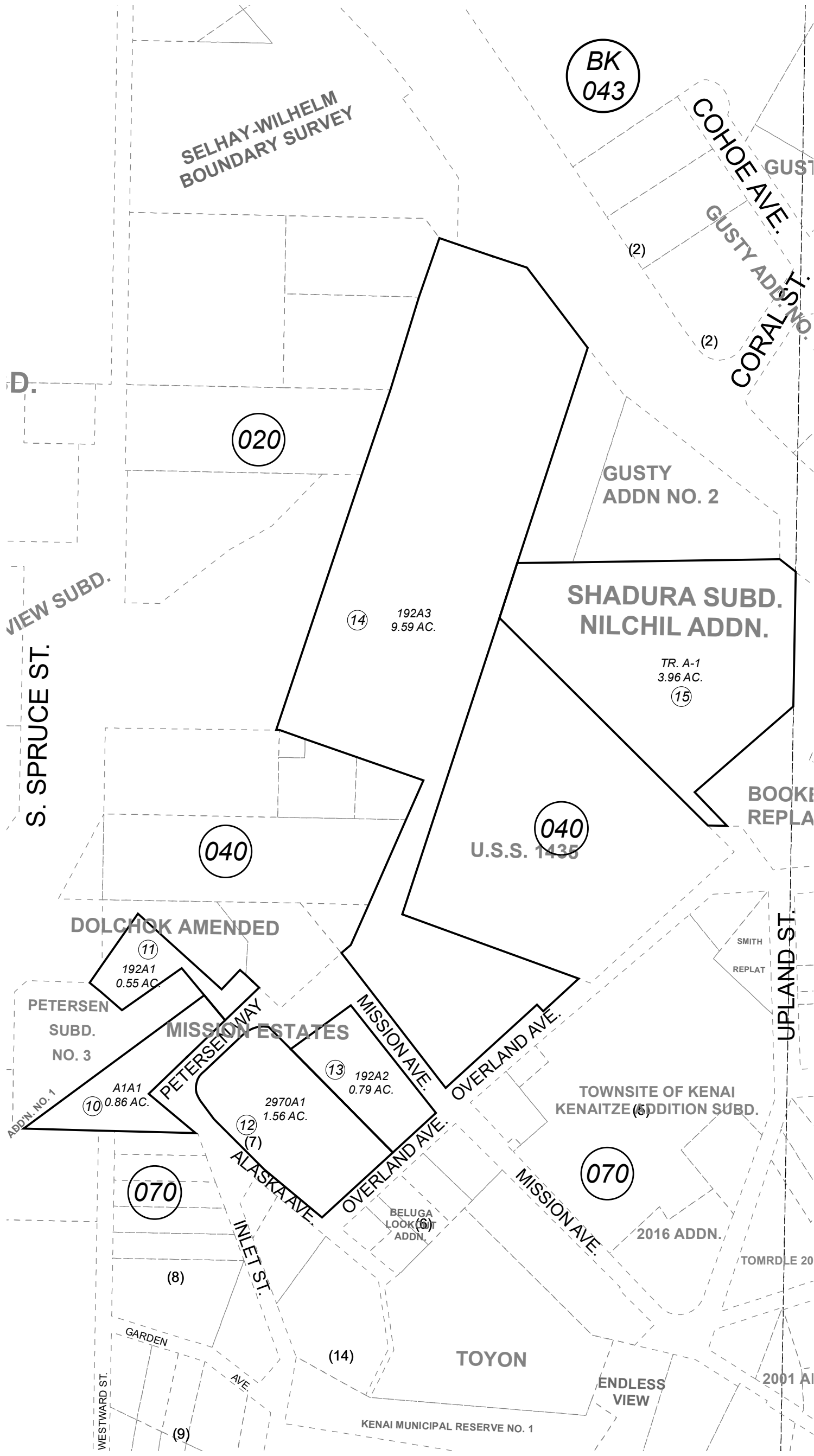


047-030

POR. SEC. 6, T05N, R11W, S.M.



This map is prepared for Kenai Peninsula Borough Assessing Dept. use only and is not intended for conveyance nor is it a survey.

Note- Assessor's block Numbers Shown in Ellipses
Assessor's Parcel Numbers Shown in Circles

SHADURA SUB □ KN0001356
MISSION ESTATES □ KN0960082
SHADURA SUB NILCHIL ADDN □ KN2019054

Assessor's Map
Kenai Peninsula Borough



DECEMBER 3, 2019		
For 2020 assessment roll		
Delete	Add	Revise
04,05,06		To 15