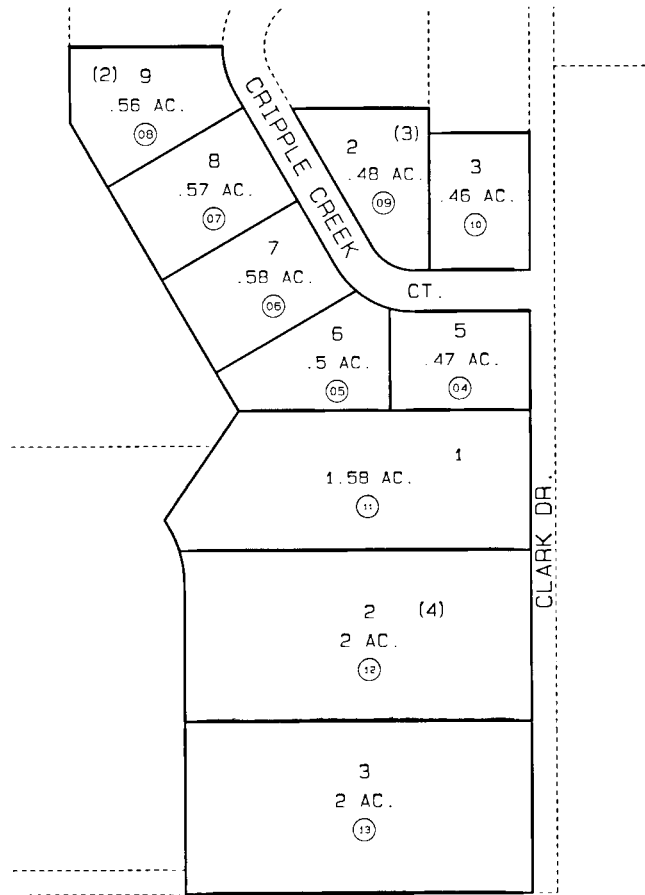


32

3

3

3



DATE: JUNE 6, 1997		
FOR 1998 ASSESSMENT ROLL		
DELETE	ADD	REVISED
TO		
1-3	035030	

Assessor's Map
Kenai Peninsula Borough

RESURRECTION VALLEY PARK
SUB NO 1
SW - 54 4/15/68

THIS MAP IS PREPARED
FOR KENAI PENINSULA
BOROUGH ASSESSING DEPT.
USE ONLY AND IS NOT
INTENDED FOR ANY
OTHER USE OR REPRESENTATION

NOTE - Assessor's Block Numbers Shown In Ellipses
Assessor's Parcel Numbers Shown In Circles