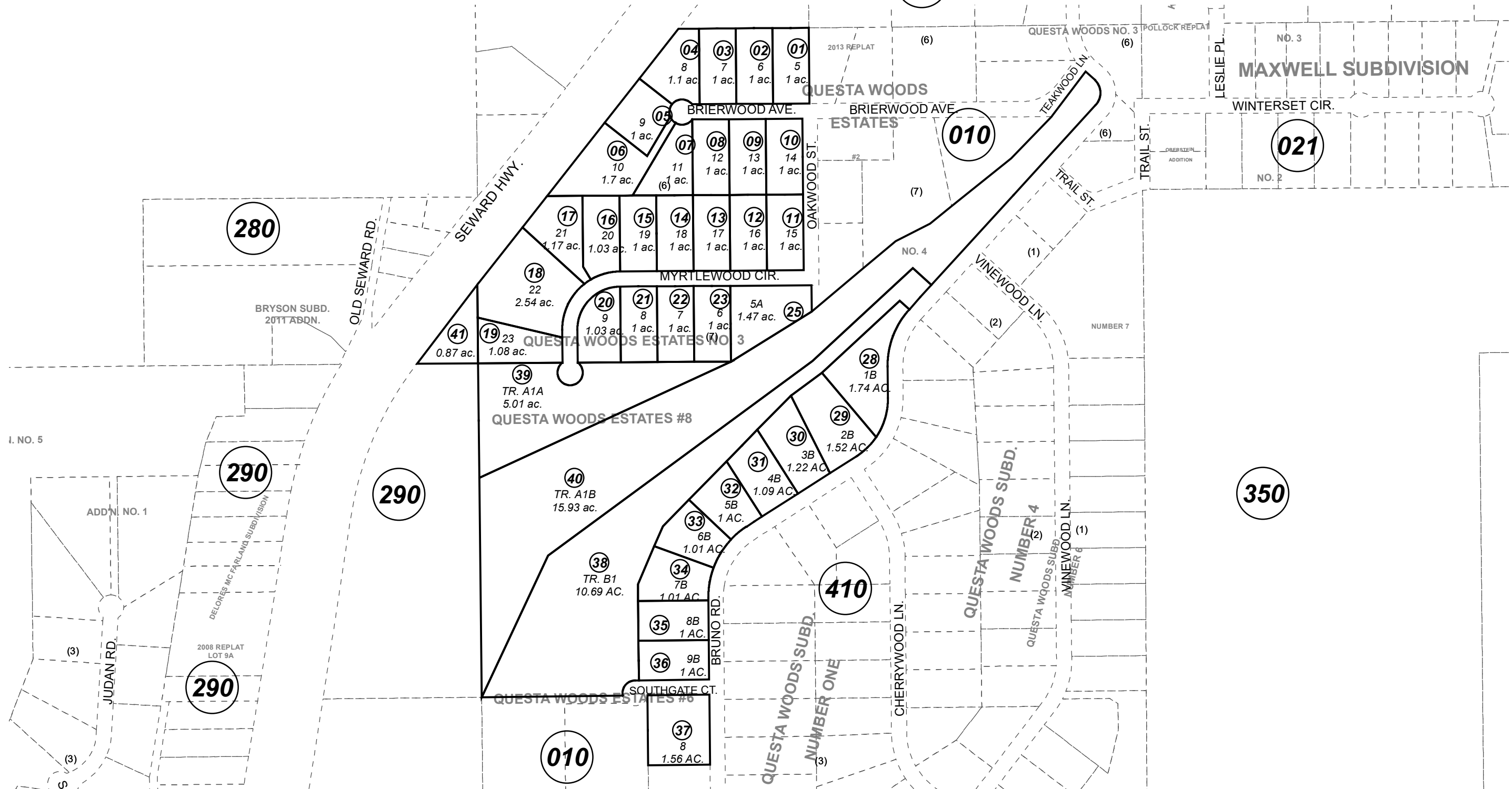


POR. SEC. 13 & 14, T01N, R01W, S.M.

020

125-022



280

290

290

290

010

010

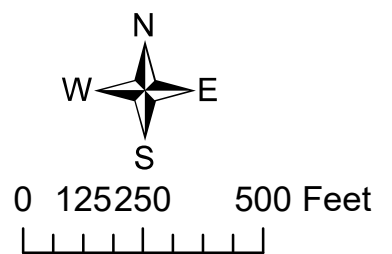
021

350

410

DECEMBER 19, 2018

For 2019 assessment roll		
Delete	Add	Revise
To		
	41	



Assessor's Map  
Kenai Peninsula Borough

QUESTA WOODS ESTATES NO. 3 SW0990005  
QUESTA WOODS ESTATES #5 SW2001015  
QUESTA WOODS ESTATES #6 SW2003014  
QUESTA WOODS SUB #8 SW2004013

This map is prepared for Kenai Peninsula Borough Assessing Dept. use only and is not intended for conveyance nor is it a survey.  
Note- Assessor's block Numbers Shown in Ellipses  
Assessor's Parcel Numbers Shown in Circles