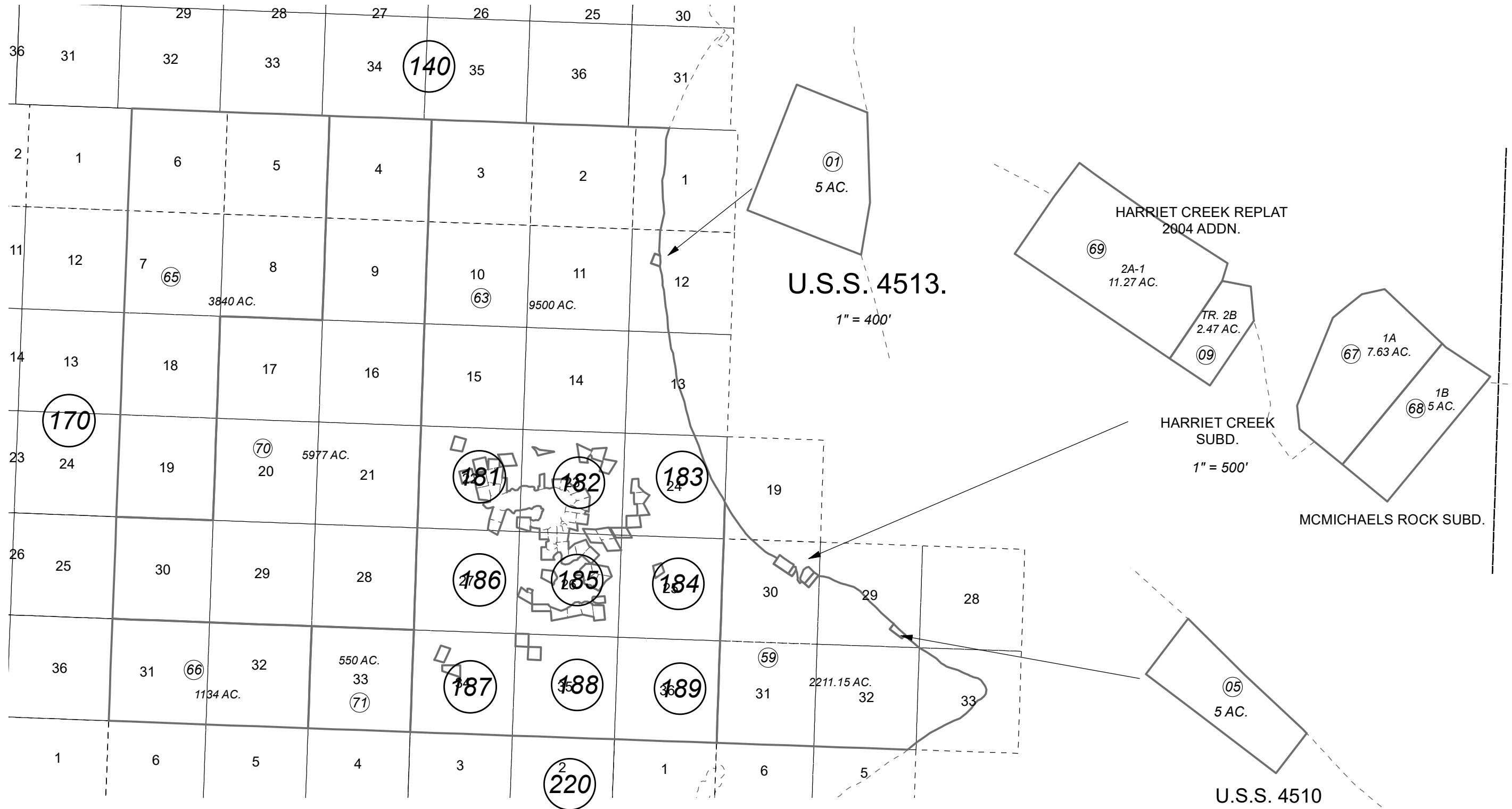


T04N, R17W & R18W, S.M.

221-180



JANUARY 20, 2022

For 2022 assessment roll		
Delete	Add	Revise
		69
(ACREAGE REVISION)		

Assessor's Map
Kenai Peninsula Borough

US SURVEY 4510 AN0004510
 US SURVEY 4511 AN0004511
 US SURVEY 4513 AN0004513
 HARRIET CREEK SUB AN0790029
 MCMICHAEL'S ROCK SUB AN2001162
 HARRIET CREEK REPLAT 2004 ADDN AN2004165
 RECORD OF SURVEY AN2021022

This map is prepared for Kenai Peninsula Borough Assessing Dept. use only and is not intended for conveyance nor is it a survey.

Note- Assessor's block Numbers Shown in Ellipses
Assessor's Parcel Numbers Shown in Circles

