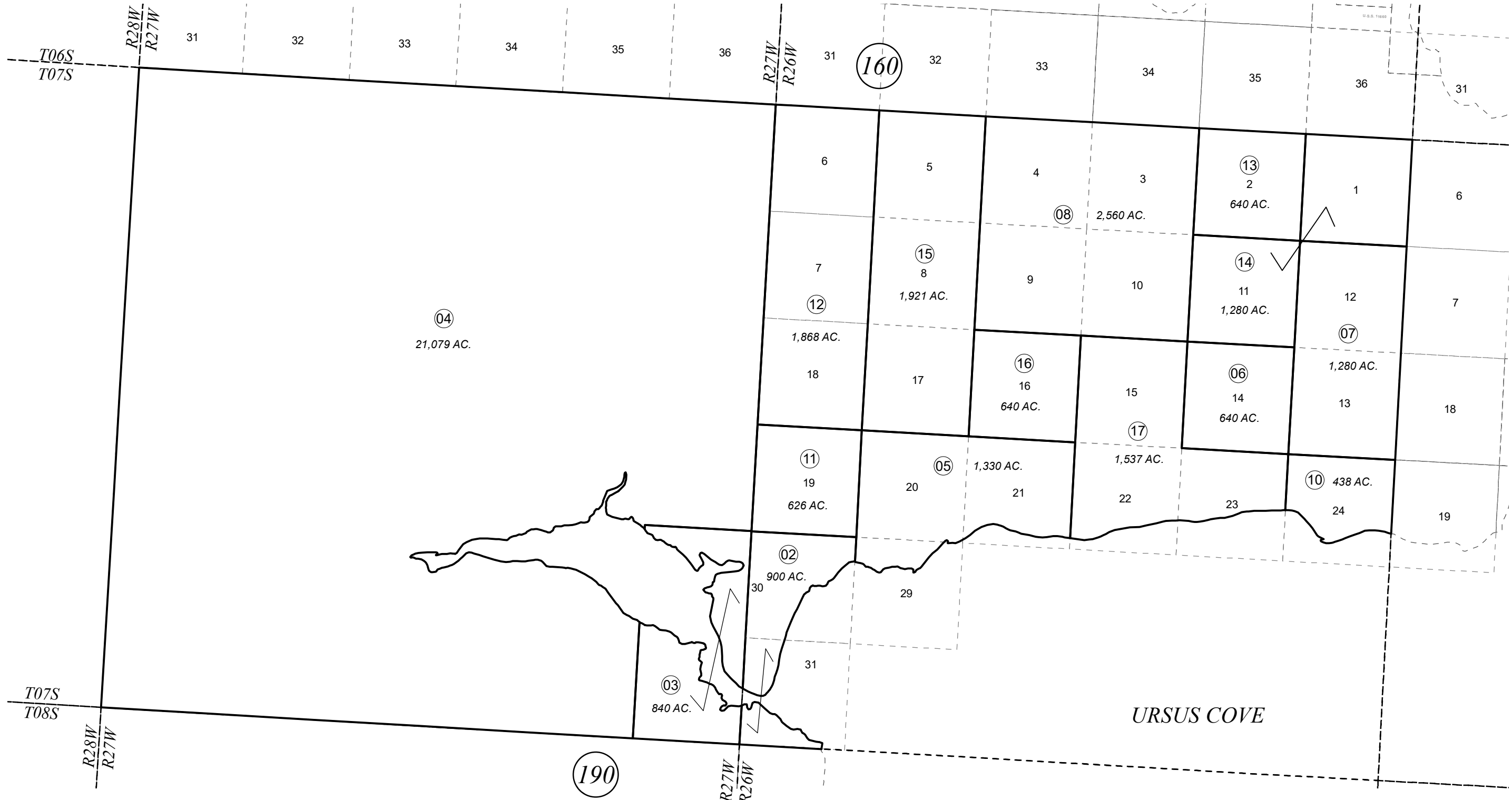


T07S, R26W, R27W S.M.

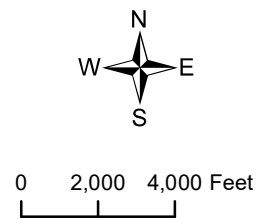
231-180



190

FEBRUARY 1, 2022

For 2022 assessment roll		
Delete	Add	Revise
To		
01,09	13-17	



Assessor's Map
Kenai Peninsula Borough

This map is prepared for Kenai Peninsula Borough Assessing Dept. use only and is not intended for conveyance nor is it a survey.

Note- Assessor's block Numbers Shown in Elipses
Assessor's Parcel Numbers Shown in Circles