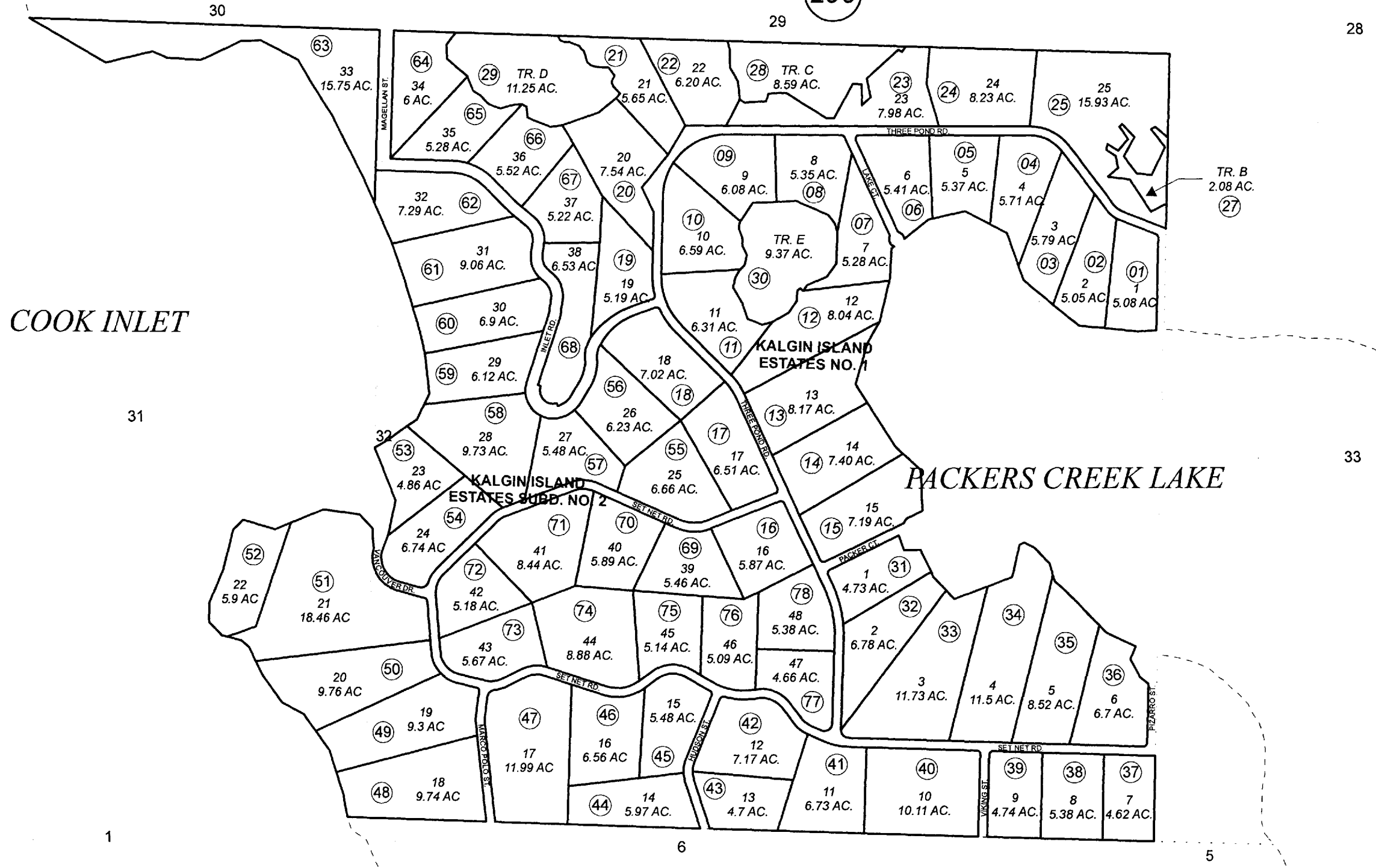


POR. SEC 31 & 32, T05N, R15W, S.M.

221-291



DECEMBER 29, 2009

For 2010 assessment roll

Delete	Add	Revise
		To
29068,		
29069;		
29126	31-78	

Assessor's Map
Kenai Peninsula Borough

KALGIN ISLAND ESTATES NO. 1 AN2004054
KALGIN ISLAND ESTATES SUB NO. 2 AN2009060

Note- Assessor's block Numbers Shown in Elipses
Assessor's Parcel Numbers Shown in Circles

This map is prepared
for Kenai Peninsula
Borough Assessing Dept.
use only and is not
intended for conveyance
nor is it a survey.