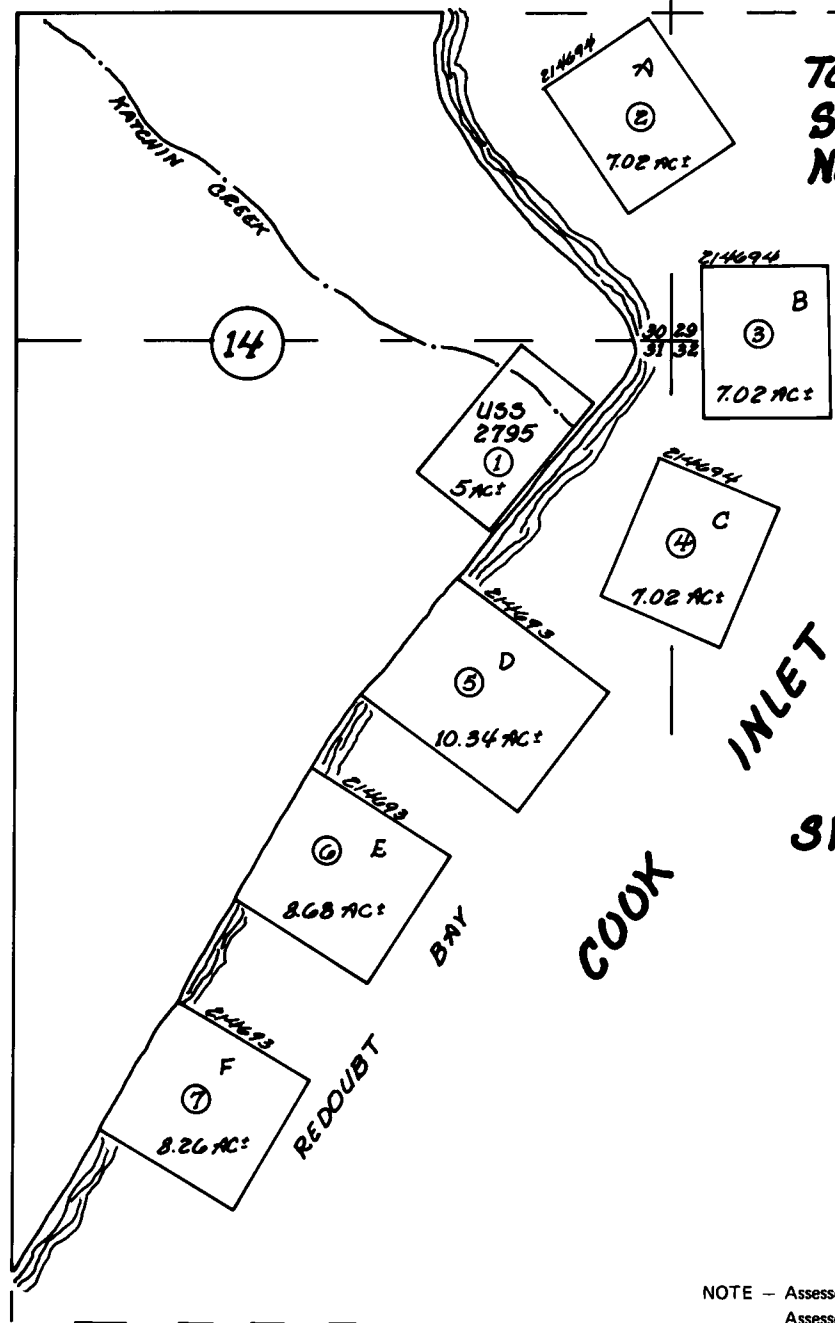


TOWNSHIP 5N, RANGE 17W 221-141  
S1/2 SE1/4 SECTION 30  
NE1/4 AND N1/2 SE1/4 SECTION 31



SFP 214693  
AND  
214694

Assessor's Map  
Kenai Peninsula Borough, Alaska

NOTE - Assessor's Block Numbers Shown in Ellipses  
Assessor's Parcel Numbers Shown in Circles