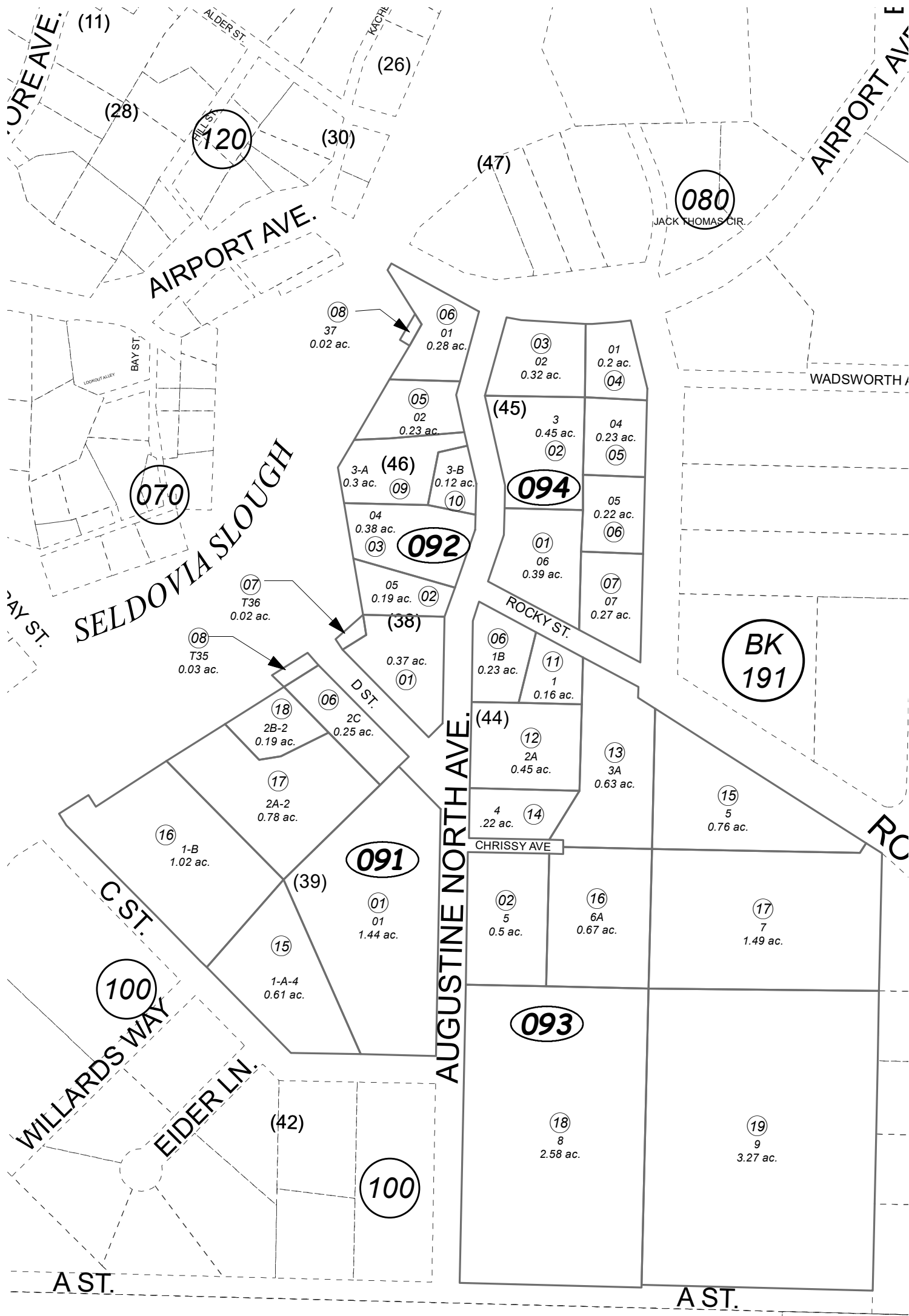


192-090

POR. SEC. 32, T08S, R14W, S.M.



NOVEMBER 7, 2022

For 2023 assessment roll	
Delete	Add
	Revise
To	
09110,	09117,
09111	09118

ALASKA TIDELANDS SURVEY NO 219- SL0640013
 SELDOVIA TOWNSITE EAST ADDN SL0660028
 SELDOVIA TOWNSITE EAST ADDN LOT 3 BLK 46 SL0840002
 SELDOVIA TOWNSITE EAST ADDN SL2003003
 SELDOVIA TOWNSITE EAST ADDN 2004 REPLAT SL2004004
 SELDOVIA TOWNSITE EAST ADDN 2006 REPLAT SL2007003
 SELDOVIA TOWNSITE EAST ADDN 2009 REPLAT SL2010006
 SELDOVIA TOWNSITE EAST ADDN 2009 CHARTIER REPLAT SL2019001
 VALHALLA 2019 REPLAT SL2020003
 SELDOVIA TOWNSITE EAST ADDN WATSON 2021 REPLAT SL2022003

Assessor's Map
 Kenai Peninsula Borough

Note- Assessor's block Numbers Shown in Ellipses
 Assessor's Parcel Numbers Shown in Circles

This map is prepared
 for Kenai Peninsula
 Borough Assessing Dept.
 use only and is not
 intended for conveyance
 nor is it a survey.