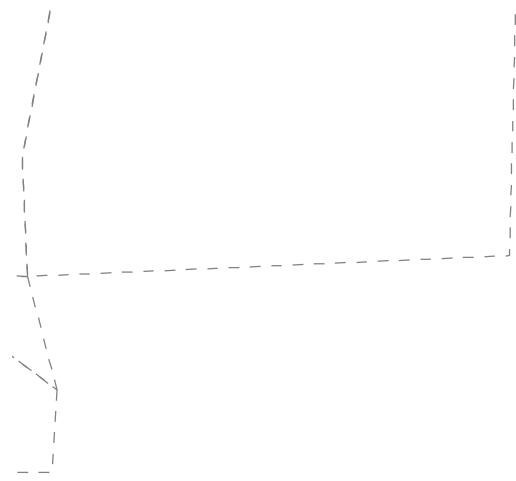
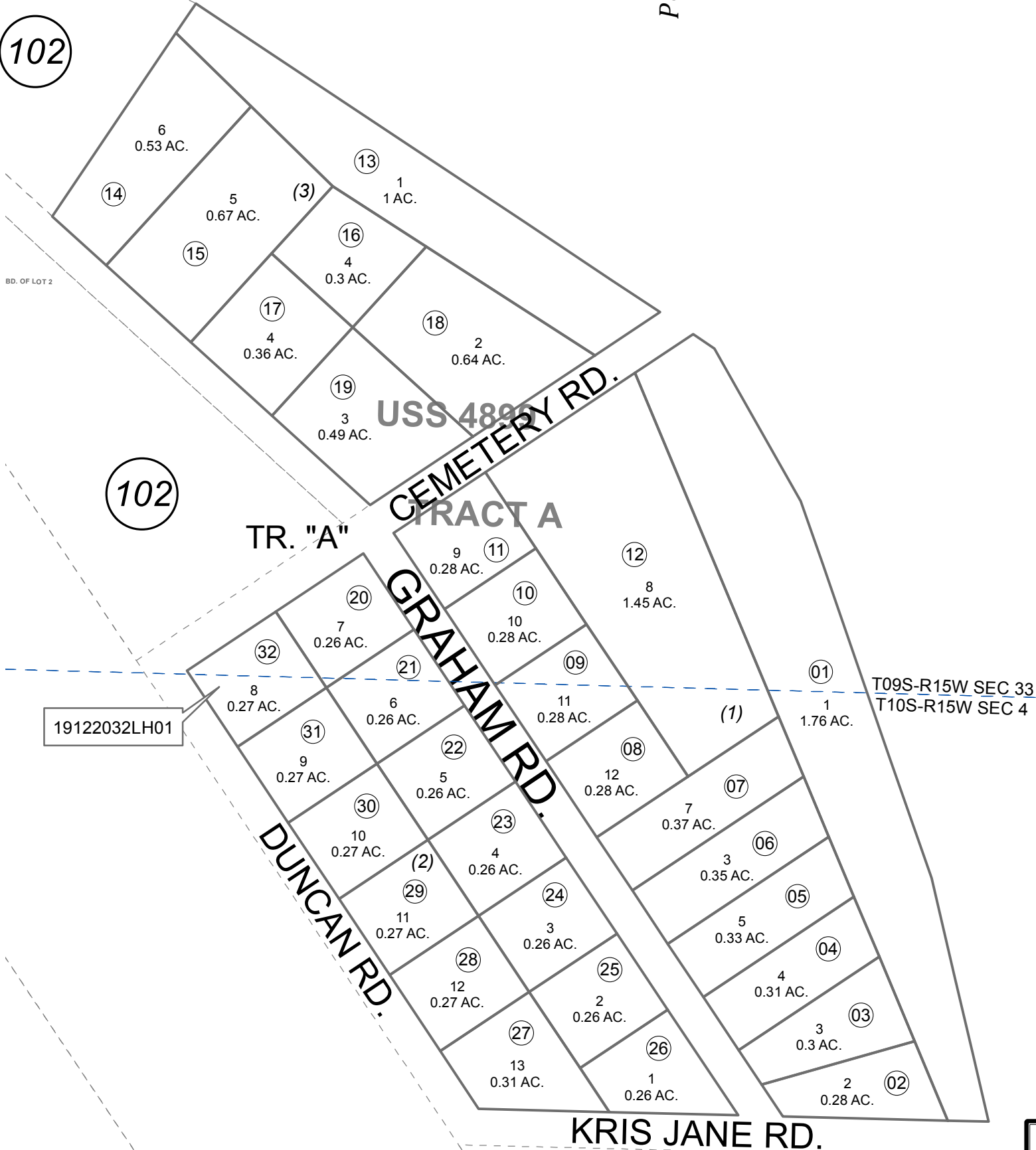


191-220

SEC. 33, T09S, R15W AND SEC. 4, T10S, R15W, S.M.



102



102

102

RT GRAHAM VILLAGE
NCAN HEIGHTS ADDN.

Port Graham



0 50 100 Feet

FEBRUARY 1, 2019

For 2019 assessment roll	
Delete	Add
	Revise
To	32LH01

This map is prepared for Kenai Peninsula Borough Assessing Dept. use only and is not intended for conveyance nor is it a survey.

Note- Assessor's block Numbers Shown in Ellipses
Assessor's Parcel Numbers Shown in Circles

Assessor's Map Kenai Peninsula Borough U.S. SURVEY 4899 SL0004899