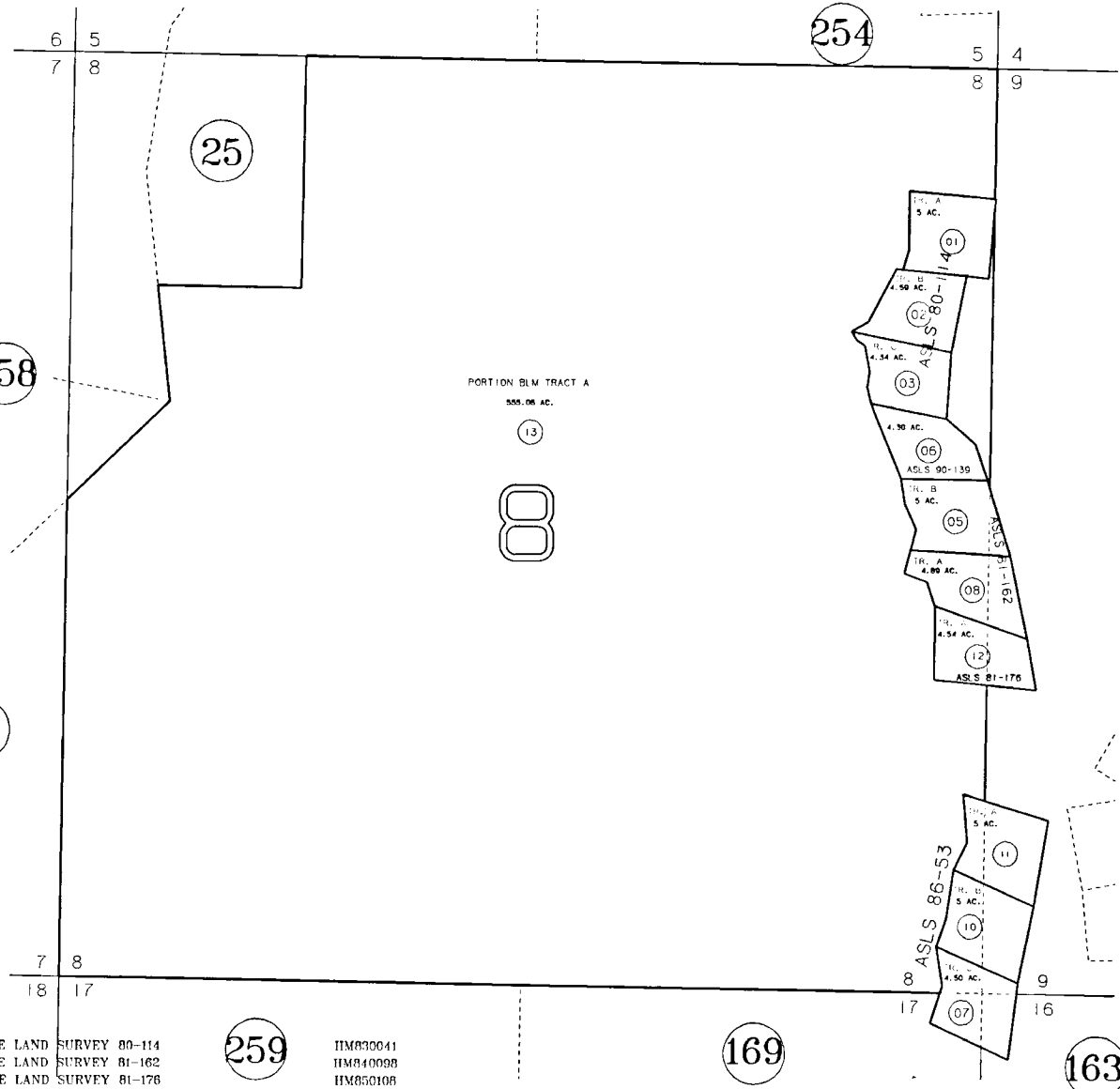


PORTION SECTIONS 8, 9, 16 & 17, T4S, R10W, SEWARD MERIDIAN

185-253



DATE AUGUST 10, 1993  
 FOR 19 94 ASSESSMENT ROLL

DELETE	ADD	REVISED
TO		
09	13	

ALASKA STATE LAND SURVEY 80-114  
 ALASKA STATE LAND SURVEY 81-162  
 ALASKA STATE LAND SURVEY 81-176  
 ALASKA STATE LAND SURVEY 86-053

HM830641  
 HM840098  
 HM850108  
 HM870065

NOTE - Assessor's Block Numbers Shown In Ellipses  
 Assessor's Parcel Numbers Shown In Circles

Assessor's Map  
 Kenai Peninsula Borough

THIS MAP IS PREPARED  
 FOR KENAI PENINSULA  
 BOROUGH ASSESSING DEPT.  
 USE ONLY AND IS NOT  
 INTENDED FOR ANY  
 OTHER USE OR REPRESENTATION