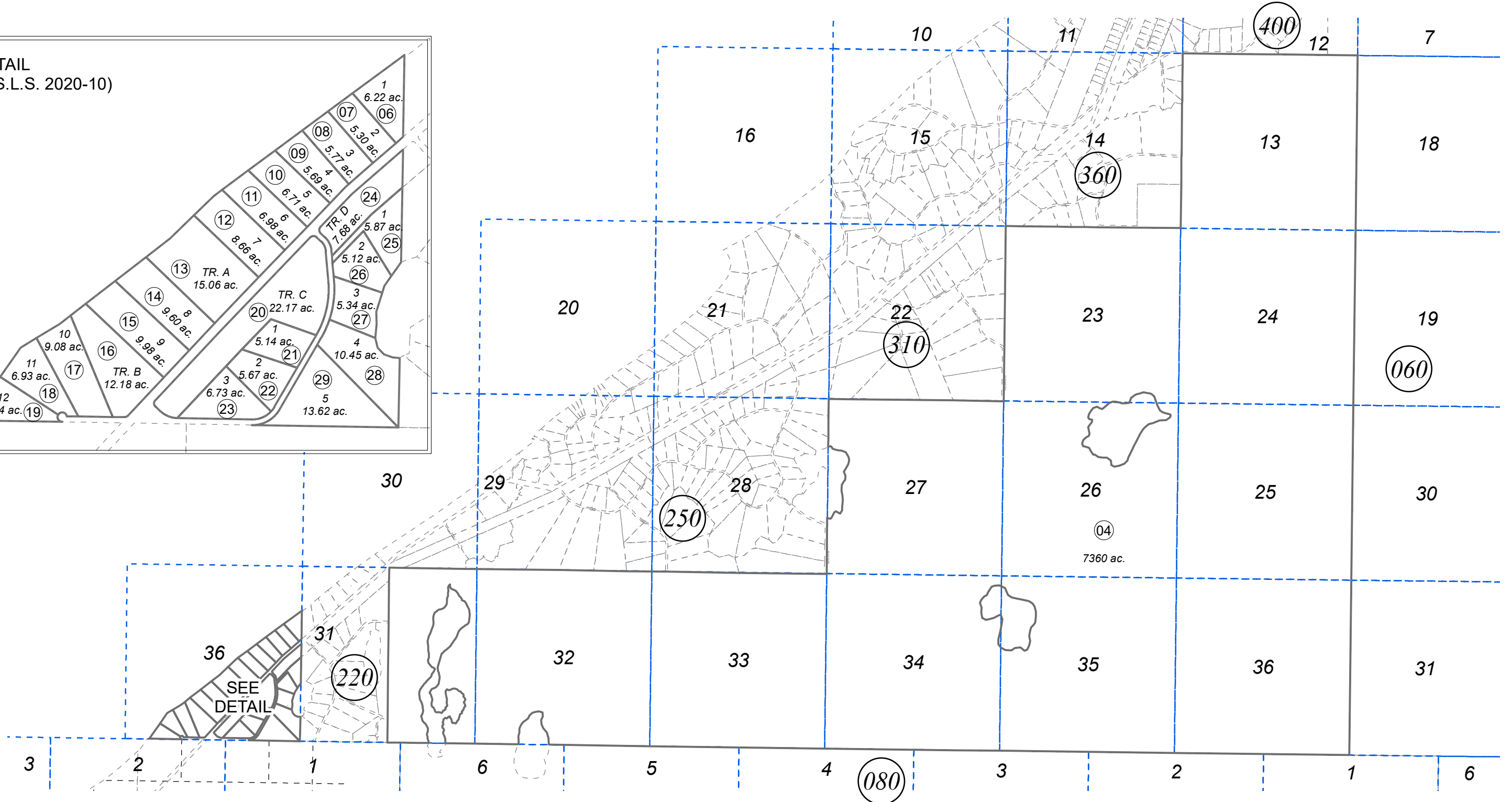
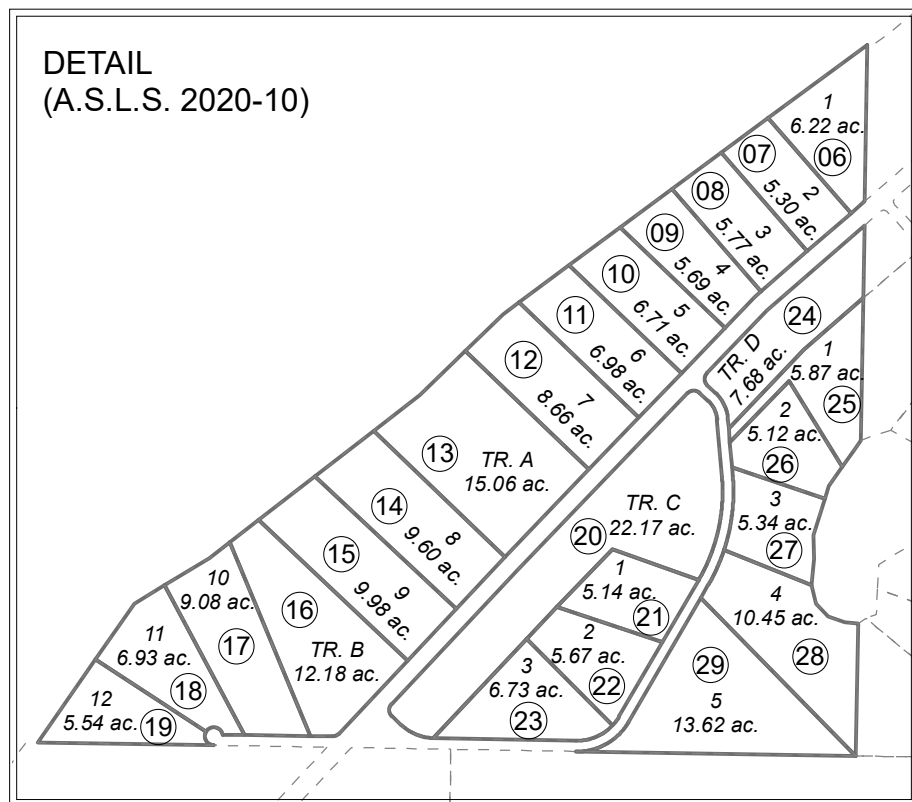


T09N, R09W, S.M.

025-050



DECEMBER 8, 2021

For 2022 assessment roll		
Delete	Add	Revise
To		
02	06-29	



0 1,000 2,000 4,000 Feet

Assessor's Map
Kenai Peninsula Borough

A.S.L.S. 2020-10 KN2021088

This map is prepared for Kenai Peninsula Borough Assessing Dept. use only and is not intended for conveyance nor is it a survey.

Note- Assessor's block Numbers Shown in Elipses
Assessor's Parcel Numbers Shown in Circles