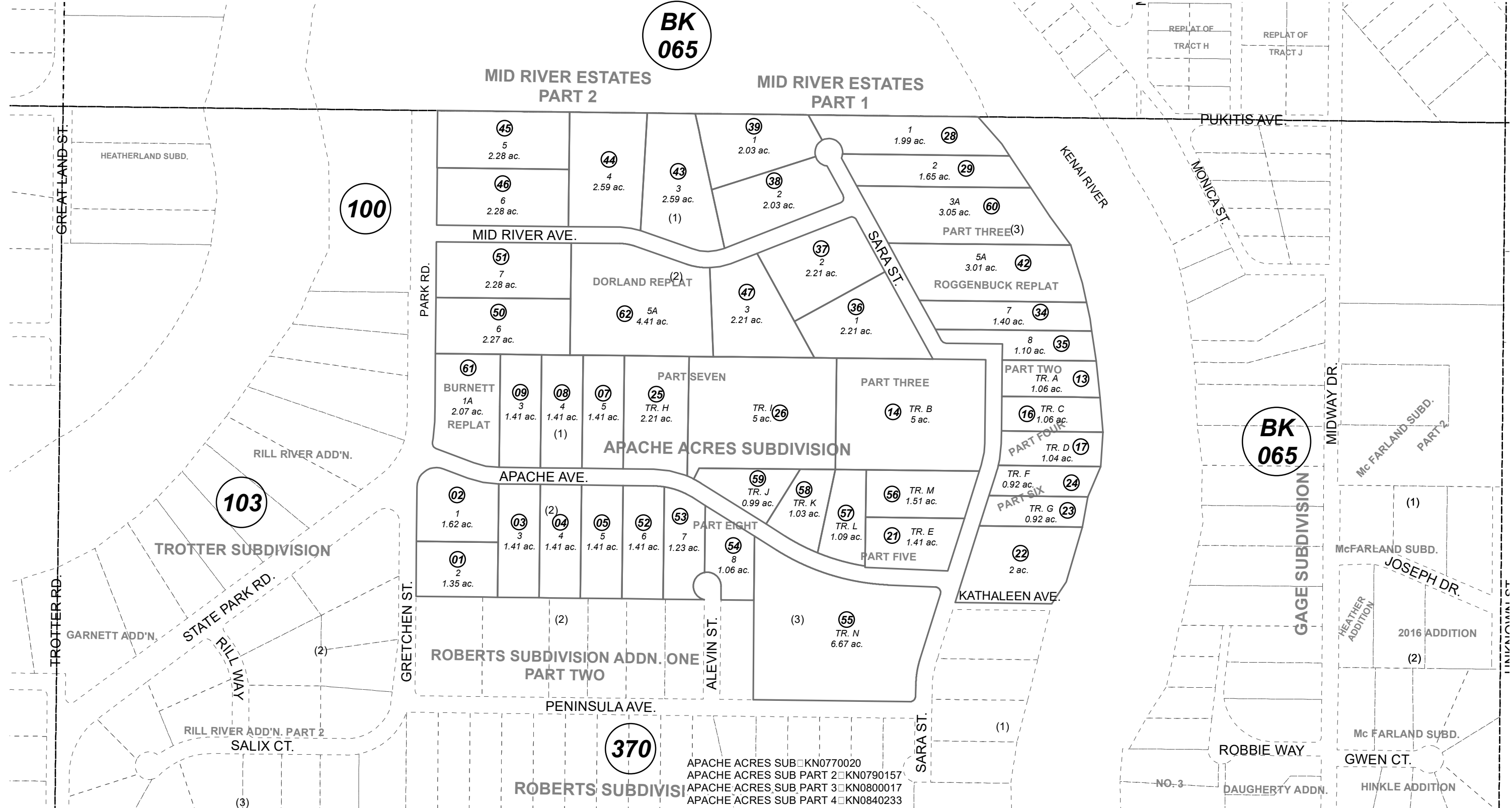


**BK
065**

MID RIVER ESTATES
PART 2

MID RIVER ESTATES
PART 1



100

103

**BK
065**

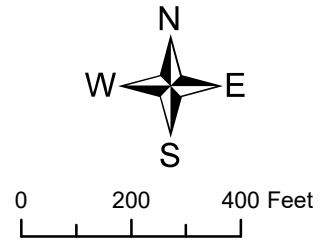
370

NOVEMBER 20, 2020

For 2021 assessment roll		
Delete	Add	Revise
	To	
48,49	62	

- APACHE ACRES SUB □ KN0770020
- APACHE ACRES SUB PART 2 □ KN0790157
- APACHE ACRES SUB PART 3 □ KN0800017
- APACHE ACRES SUB PART 4 □ KN0840233
- APACHE ACRES SUB PART 5 □ KN0890046
- APACHE ACRES SUB PART 6 □ KN0890050
- APACHE ACRES SUB PART SEVEN □ KN0910052
- MID RIVER ESTATES PART 1 □ KN2001017
- MID RIVER ESTATES ROGGENBUCK REPLAT KN2002124
- MID RIVER ESTATES PART 2 KN2003006
- APACHE ACRES SUB PART EIGHT KN2004134
- MID RIVER ESTATES PART 1 AMENDED KN2007092
- MID RIVER ESTATES PART THREE KN2014015
- APACHE ACRES SUB BURNETT REPLAT KN2014035
- MID RIVER ESTATES PART 2 DORLAND REPLAT KN2020062

Assessor's Map
Kenai Peninsula Borough



This map is prepared for Kenai Peninsula Borough Assessing Dept. use only and is not intended for conveyance nor is it a survey.

Note- Assessor's block Numbers Shown in Ellipses
Assessor's Parcel Numbers Shown in Circles