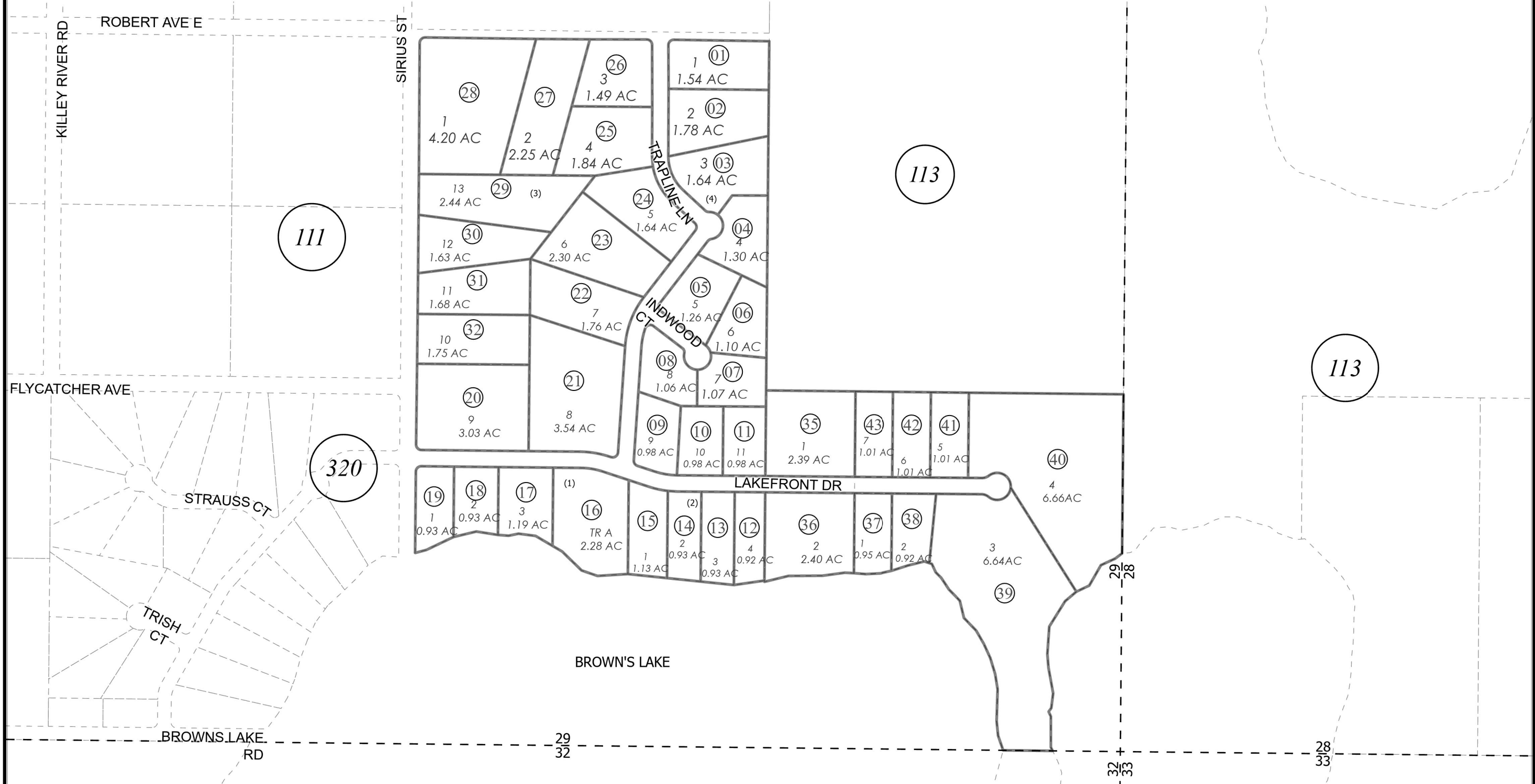


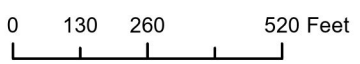
POR SE1/4 SEC. 29, T05N, R08W, S.M.

066-321



JUNE 10, 2024

For 2025 assessment roll		
Delete	Add	Revise
	To	
34	37-43	



Assessor's Map
Kenai Peninsula Borough

NORTH SHORES RIDGE SUB KN0860014
KATHLEEN ACRES KN2007122
TROUT VIEW SUB KN2024019

This map is prepared for Kenai Peninsula Borough Assessing Dept. use only and is not intended for conveyance nor is it a survey.
Note- Assessor's block Numbers Shown in Ellipses
Assessor's Parcel Numbers Shown in Circles